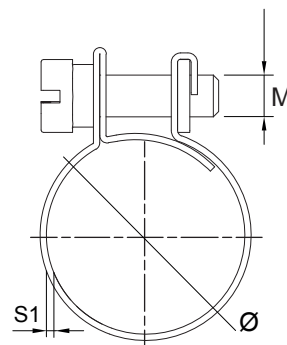
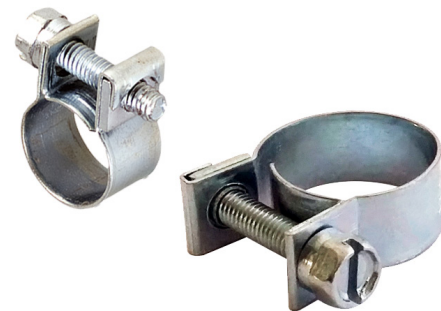


## Collare Benzina in Acciaio Zincato W1

### Zinc Plated Mini Clamp W1

| Cod.  | Ø min.<br>mm | Ø max<br>mm | B1<br>mm | M<br>mm | S1<br>mm | Coppia<br>di Serraggio<br>Safe Working<br>Torque | D. Serraggio<br>Ideale mm.<br>D. Ideal<br>tightening mm | U.V. |
|-------|--------------|-------------|----------|---------|----------|--|---|------|
| CBZ07 | 7            | 9           | 9        | 4       | 0,5 - 1  | 1,0 Nm   | 8   | 100  |
| CBZ08 | 8            | 10          | 9        | 4       | 0,5 - 1  | 1,0 Nm   | 9   | 100  |
| CBZ09 | 9            | 11          | 9        | 4       | 0,5 - 1  | 1,0 Nm   | 10  | 100  |
| CBZ10 | 10           | 12          | 9        | 4       | 0,5 - 1  | 1,0 Nm   | 11  | 100  |
| CBZ11 | 11           | 13          | 9        | 4       | 0,5 - 1  | 1,0 Nm   | 12  | 100  |
| CBZ12 | 12           | 14          | 9        | 4       | 0,5 - 1  | 1,0 Nm   | 13  | 100  |
| CBZ13 | 13           | 15          | 9        | 4       | 0,5 - 1  | 1,0 Nm   | 14  | 100  |
| CBZ14 | 14           | 16          | 9        | 4       | 0,5 - 1  | 1,0 Nm   | 15  | 100  |
| CBZ15 | 15           | 17          | 9        | 4       | 0,5 - 1  | 1,0 Nm   | 16  | 100  |
| CBZ16 | 16           | 18          | 9        | 4       | 0,5 - 1  | 1,0 Nm   | 17  | 100  |
| CBZ17 | 17           | 19          | 9        | 4       | 0,5 - 1  | 1,0 Nm   | 18  | 100  |
| CBZ18 | 18           | 20          | 9        | 4       | 0,5 - 1  | 1,0 Nm   | 19  | 100  |
| CBZ19 | 19           | 21          | 9        | 4       | 0,5 - 1  | 1,0 Nm   | 20  | 100  |
| CBZ22 | 22           | 25          | 9        | 4       | 0,5 - 1  | 1,0 Nm   | 23  | 100  |
| CBZ28 | 28           | 31          | 9        | 4       | 0,5 - 1  | 1,0 Nm   | 29  | 100  |
| CBZ29 | 29           | 32          | 9        | 4       | 0,5 - 1  | 1,0 Nm   | 30  | 100  |
| CBZ31 | 31           | 34          | 9        | 4       | 0,5 - 1  | 1,0 Nm   | 32  | 100  |



#### Caratteristiche

#### Materiale Banda Carter e Bullone:

Acciaio zincato

#### Caratteristiche Banda: Liscia

#### Caratteristiche Vite:

Con bullone a taglio cacciavite  
e testa esagonale

#### Product specification

#### Band, Carter and Nut Material:

Galvanized Steel

#### Band Features: Smooth band

#### Screw Features:

Bolt with slot and hexagonal head

