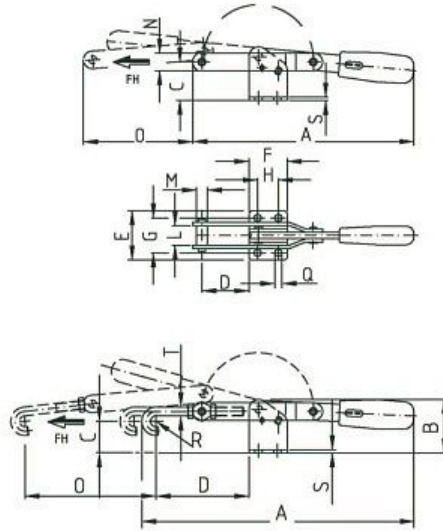


**B2c Toggle Clamps** - SERIES **SBT** Latch Series

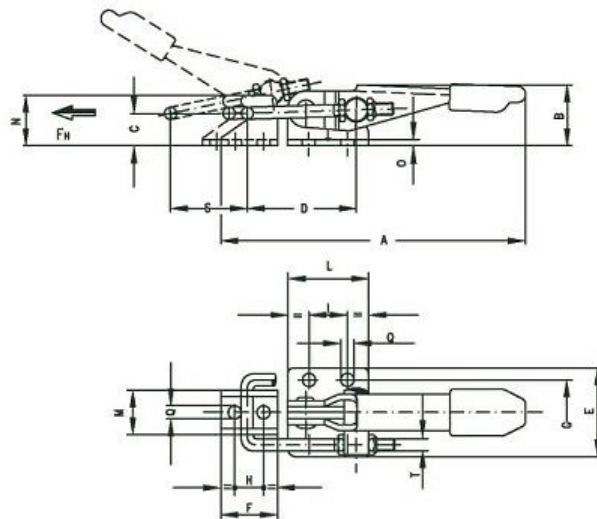


**Characteristics**

**Material:** Sheet Steel UNI 5867. Steel Hook UNI 7230-73. Zinc Plated

Code	A	B	C	D	E	F	G	H	L	M	N	O	Q	S	Max Clamping Force daN	Weight gr.	Packing Pcs.
<b>B2SBT200/T</b>	203	49	37	43	45	35	32	19	18	10	16	100	6,5	3	200	300	1
<b>B2SBT200/TF</b>	250	49	29	85-105	45	35	32	19			16	100	6,5	3	200	380	1
<b>B2SBT300/T</b>	226	49	35	43	60	48	45	32	21	10	18	104	8,3	3	300	460	1
<b>B2SBT300/TF</b>	305	49	25	90-120	60	48	45	32			18	104	8,3	3	300	560	1
<b>B2SBT400/T</b>	278	60,5	43	45,5	84	54	60,5	28,5	26	14	25	160	10,5	5	400	1000	1
<b>B2SBT400/TF</b>	343	60,5	30	105-135	84	54	60,5	28,5			25	160	10,5	5	400	1200	1

**B2c Toggle Clamps** - SERIES **SBT2** Double Latch Series



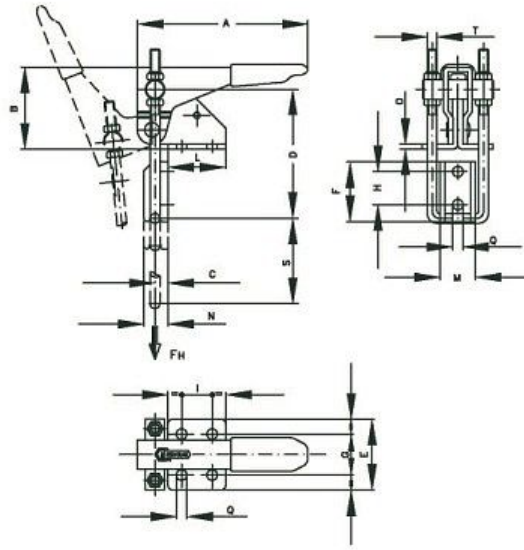
**Characteristics**

**Material:** Sheet Steel UNI 5867. Steel Hook UNI 7230-73. Zinc Plated

Code	A	B	C	D	E	F	G	H	I	L	M	N	O	Q	S	T	Max Clamping Force daN	Weight gr.	On request	Packing Pcs.
------	---	---	---	---	---	---	---	---	---	---	---	---	---	---	---	---	------------------------	------------	------------	--------------

<b>B2SBT160/T2</b>	98	25	12	35-44	28	20	19	10	16	26	14	18	2	4,3	25	M4	160	85	Stainless Steel Version	1
<b>B2SBT320/T2</b>	152	30	16	54-63	44	28	32	14	19	40	22	25	3	6,5	48	M6	320	250	Stainless Steel Version	1
<b>B2SBT700/T2</b>	220	42	24	70-90	54	38	38	19	41,5	60	26	36	3,5	8,5	58	M8	700	600	Stainless Steel Version	1

**B2c Toggle Clamps** - SERIES **SBT3** 90° Double Latch Series

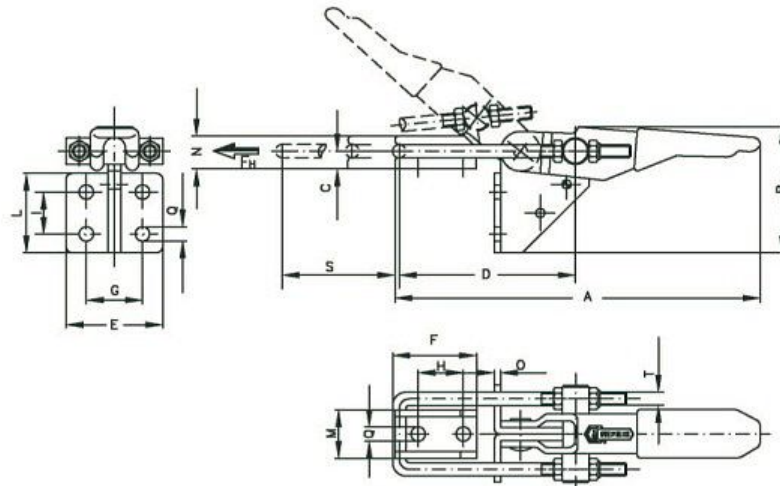
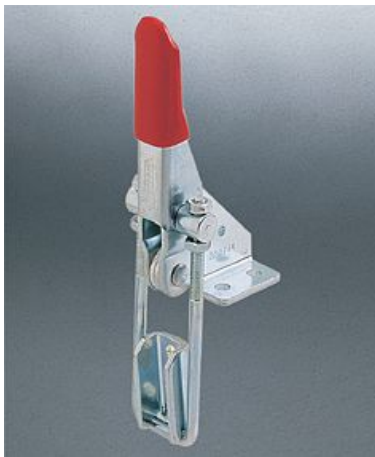


**Characteristics**

**Material:** Sheet Steel UNI 5867. Steel Hook UNI 7230-73. Zinc Plated

Code	A	B	C	D	E	F	G	H	I	L	M	N	O	Q	S	T	Max Clamping Force daN	Weight gr.	On request	Packing Pcs.
<b>B2SBT160/T3</b>	68	36	5	48-58	35	25,5	22	14,3	13	26	14	10	2	4,3	34,5	M4	160	100	Stainless Steel Version	1
<b>B2SBT320/T3</b>	106	52,5	8	94-114	44	37	25,5	20,5	19	36	22	15	3	6,5	53	M6	320	320	Stainless Steel Version	1
<b>B2SBT700/T3</b>	147	66	13	98-122	54	48,5	36,5	27	32	52	26	23	3,5	8,5	64	M8	700	680	Stainless Steel Version	1

**B2c Toggle Clamps** - SERIES **SBT4** 180° Double Latch Series

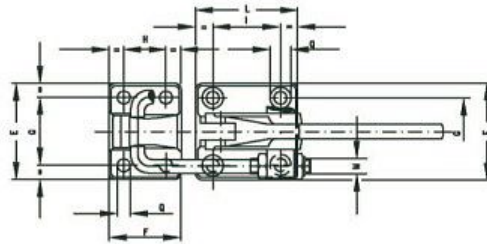
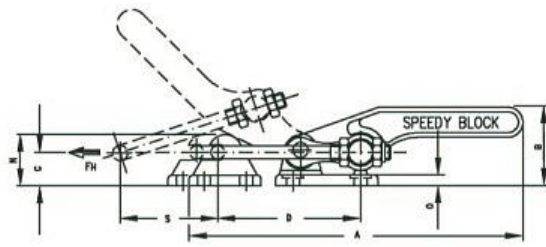


**Characteristics**

**Material:** Sheet Steel UNI 5867. Steel Hook UNI 7230-73. Zinc Plated

Code	A	B	C	D	E	F	G	H	I	L	M	N	O	Q	S	T	Max Clamping Force daN	Weight gr.	Packing Pcs.
<b>B2SBT160/T4</b>	99	40	5	48-58	35	25,5	22	14,3	13	26	14	10	2	4,3	32	M4	160	95	1
<b>B2SBT320/T4</b>	152	57,5	8	94-114	44	37	25,5	20,5	19	36	22	15	3	6,5	53	M6	320	295	1
<b>B2SBT700/T4</b>	225	82	13	98-122	54	48,5	36,5	27	32	52	26	23	3,5	8,5	64	M8	700	655	1

**B2c Toggle Clamps** - SERIES **SBTP** Heavy Latch Series

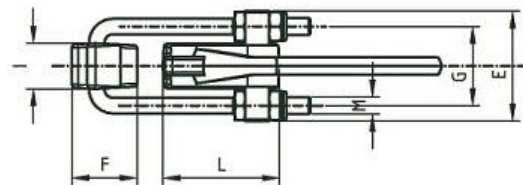
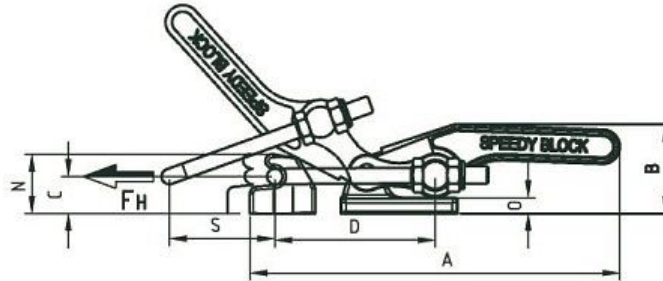


**Characteristics**

**Material:** Sheet Steel UNI 5867. Steel Hook UNI 7230-73. Zinc Plated

Code	A	B	C	D	E	F	G	H	I	L	M	N	O	Q	S	Max Clamping Force daN	Weight gr.	On request	Packing Pcs.
<b>B2SBT1400/T2</b>	220	52	21	93-105	64	48	45	28	45	68	M10	34	7	8,5	63	1700	1110	Stainless Steel Version	1
<b>B2SBT2800/T2</b>	273	65	27	113-123	80	60	57	35	57	85	M12	42	9	10,5	78	4000	2070	Stainless Steel Version	1

**B2c Toggle Clamps** - SERIES **SBTS** Weldable Heavy Latch Series

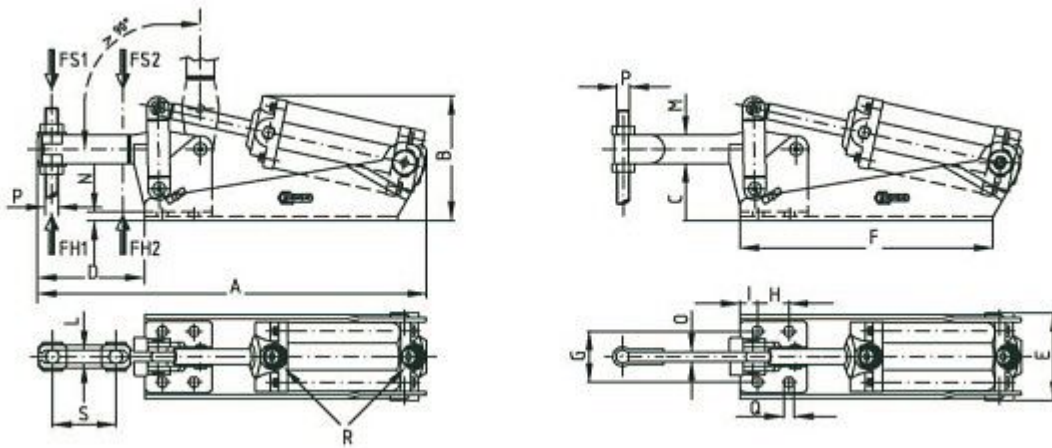
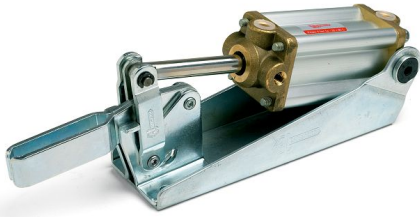


**Characteristics**

**Material:** Sheet Steel UNI 5867. Steel Hook UNI 7230-73. Zinc Plated

Code	A	B	C	D	E	F	G	I	L	M	N	O	S	Max Clamping Force daN	Weight gr.	On request	Packing Pcs.
<b>B2SBT1400/T2S</b>	216	52	21	93-105	64	38	46	26,5	68	M10	34,5	9,2	63	1700	930	Stainless Steel Version	1
<b>B2SBT2800/T2S</b>	257	65	27	113-123	80	50	55	32	80	M12	43	12,7	78	4000	1708	Stainless Steel Version	1

**B2c Toggle Clamps** - SERIES **SBP** Pneumatic Series



**Characteristics**

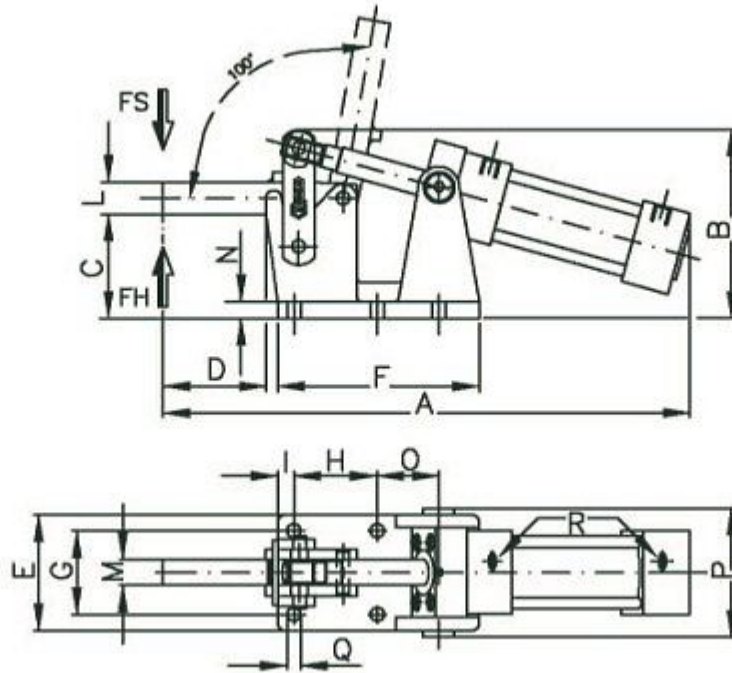
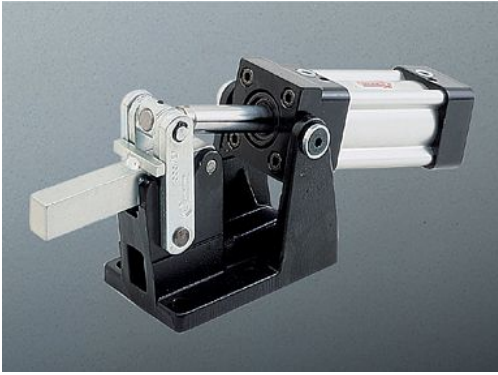
**Main Part Material:** Components in UNI 5867 case-hardening sheet steel. Hardening and tempered supporting pivots

**Specific Features:** Also available the version EP (please contact our commercial office)

**Notes:** M as code's last letter point out the MAGNETIC MODELS

Code	A	B	C	D	E	F	G	H	I	L	M	N	P	Q	R	S	Max Clamping Force daN	Weight gr.	Packing Pcs.
<b>B2SBP70/AP3</b>	163	51,5	21	38	42	92	24	15	7	5,2	11	4	5	4,5	1/8"	20	145	500	1
<b>B2SBP125/AP3</b>	200	70,5	30	50	47,5	150	29	19	8	6,2	14	4,5	6	5,5	1/8"	23	300	700	1
<b>B2SBP200/AP3</b>	246	79	36	67,5	53	160	32	20	11	8,5	18	5,5	8	6,5	1/8"	40	350	1070	1
<b>B2SBP200/APM</b>	246	79	36	67,5	53	160	32	20	11	8,5	18	5,5	8	6,5	1/8"	40	350	1070	1
<b>B2SBP300/AP3</b>	304,5	98	48	78,5	74	195,5	46	29	11	10,5	20	8,5	10	8,5	1/4"	42	450	2100	1
<b>B2SBP300/APM</b>	304,5	98	48	78,5	74	195,5	46	29	11	10,5	20	8,5	10	8,5	1/4"	42	450	2100	1
<b>B2SBP400/AP3</b>	360	107,5	51	110	74	216	45	32	10	12,5	22	10	12	8,5	1/4"	66	640	3100	1
<b>B2SBP400/APM</b>	360	107,5	51	110	74	216	45	32	10	12,5	22	10	12	8,5	1/4"	66	640	3100	1

**B2c Toggle Clamps** - SERIES **SBPP** Heavy Pneumatic Series



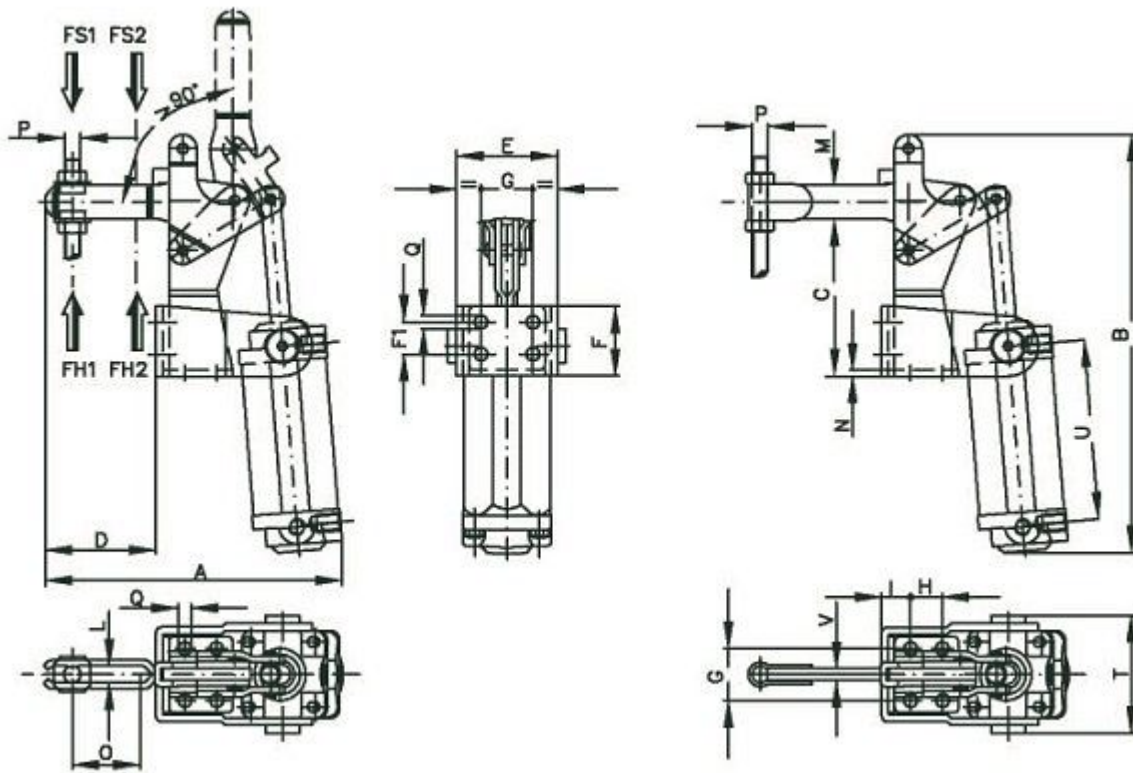
**Characteristics**

**Main Part Material:** Main unit in chemi-black UNI ISO 1083 iron cast. Other parts galvanized UNI 5105, weldable

**Notes:** M as code's last letter point out the MAGNETIC MODELS

Code	A	B	C	D	E	F	G	H	I	L	M	N	O	P	Q	R	Max Clamping Force daN	Weight gr.	Material	Packing Pcs.
<b>B2SBP1000/EPM</b>	410	146,5	80	80	90	155	65	65	12,5	25	20	13	48	102	10,5	1/4"	1000	6500	Magnetic Cylinder	1
<b>B2SBP2000/EPM</b>	487	171,5	90	100	100	176	70	70	15	35	20	13	56	112	10,5	3/8"	2000	9500	Magnetic Cylinder	1

**B2c Toggle Clamps** - SERIES **SBPQ** 45° Pneumatic Series



**Characteristics**

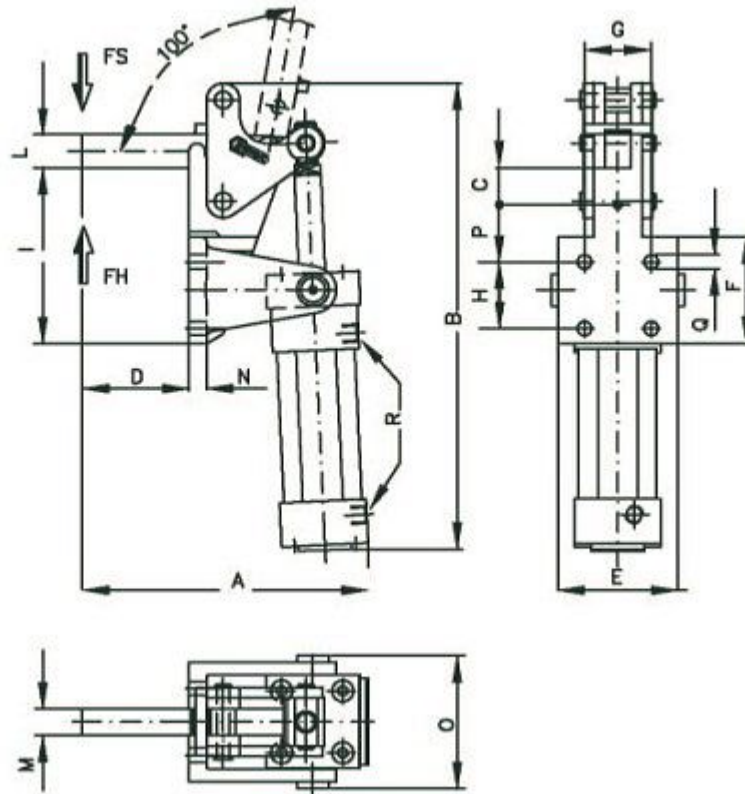
**Main Part Material:** Components in UNI 5867 case-hardening sheet steel. Hardening and tempered supporting pivots

**Specific Features:** Also available the version EPV (please contact our commercial office)

**Notes:** M as code's last letter point out the MAGNETIC MODELS

Code	A	B	C	D	E	F	F1	G	H	I	L	M	N	O	P	Q	T	U	Max Clamping Force daN	Weight gr.	Packing Pcs.
<b>B2SBP200/APV3</b>	149	210	78	55	51	35	16	26	16	14,5	8,5	17	3	34	8	6,5	69,5	1/8"	350	1200	1
<b>B2SBP200/APVM</b>	149	210	78	55	51	35	16	26	16	14,5	8,5	17	3	34	8	6,5	69,5	1/8"	350	1200	1
<b>B2SBP300/APV3</b>	186	258	108	71	60,5	50	30	30	28	16,5	10,3	20	3	42	10	85	68,5	1/4"	450	2450	1
<b>B2SBP300/APVM</b>	186	258	108	71	60,5	50	30	30	28	16,5	10,3	20	3	42	10	85	68,5	1/4"	450	2450	1

**B2c Toggle Clamps** - SERIES **SBPQP** 45° Heavy Pneumatic Series



**Characteristics**

**Main Part Material:** Main unit in chemi-black UNI ISO 1083 iron cast. Other parts galvanized UNI 5105, weldable

**Notes:** M as code's last letter point out the MAGNETIC MODELS

Code	A	B	D	E	F	G	H	I	L	M	N	O	Q	R	Max Clamping Force daN	Weight gr.	Material	Packing Pcs.
<b>B2SBP1000/EPVM</b>	215	355	80	90	80	50	50	130	25	20	13	102	10,5	1/4"	1000	6500	Magnetic Cylinder	1
<b>B2SBP2000/EPVM</b>	246,5	424	100	100	90	54	58	157	35	20	14	112	13	3/8"	2000	9000	Magnetic Cylinder	1