



B1c Operating Components



MLC
 Hand Crank, Blind
 Hole



MLCT
 Hand Crank,
 Collapsible Grip,
 Blind Hole




MLP
 Hand Crank, Thru-
 Hole



MLPT
 Hand Crank,
 Collapsible Grip,
 Thru-Hole



MLQP
 Hand Crank,
 Square Thru-Hole



MLQT
 Hand Crank,
 Collapsible Grip,
 Square Thru-Hole




VF
 Bar-Pattern
 Handwheel




VFG
 Bar-Pattern
 Handwheel
 Revolving Grip




VFIG
 Bar-Pattern
 Handwheel
 Revolving Grip



VFT
 Bar-Pattern
 Handwheel Snap
 Handle Collapsible



VL
 Handwheel, 4-
 Spokes




VLA
 Handwheel, 4-
 Spokes, Visible
 Hub




VLG
 Handwheel, 4-
 Spokes Revolving
 Grip



VLGA
 Handwheel, 4-
 Spokes Revolving
 Grip and Visible
 Hub



VLT
 Handwheel, 4-
 Spokes Snap
 Handle Collapsible



VLTA
 Handwheel, 4-
 Spokes Snap
 Handle Collapsible
 and Visible Hub

B1c Operating Components



VP
Handwheel Solid



VPA
Handwheel Solid
with Visible Hub



VPG
Handwheel Solid
Revolving Handle



VPGA
Handwheel Solid
Revolving Handle
and Visible Hub

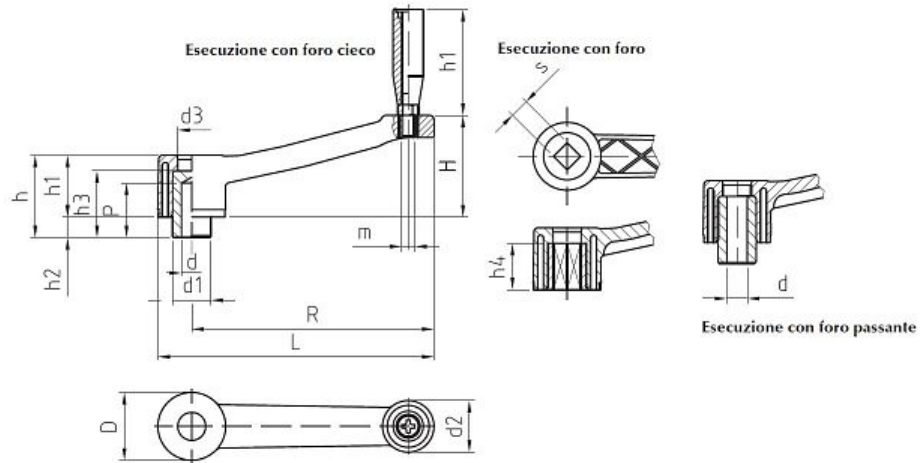


VPT
Handwheel Solid
Snap Handle
Collapsible



VPTA
Handwheel Solid
Snap Handle
Collapsible and
Visible Hub

B1c Operating Components - SERIES MLC Hand Crank, Blind Hole



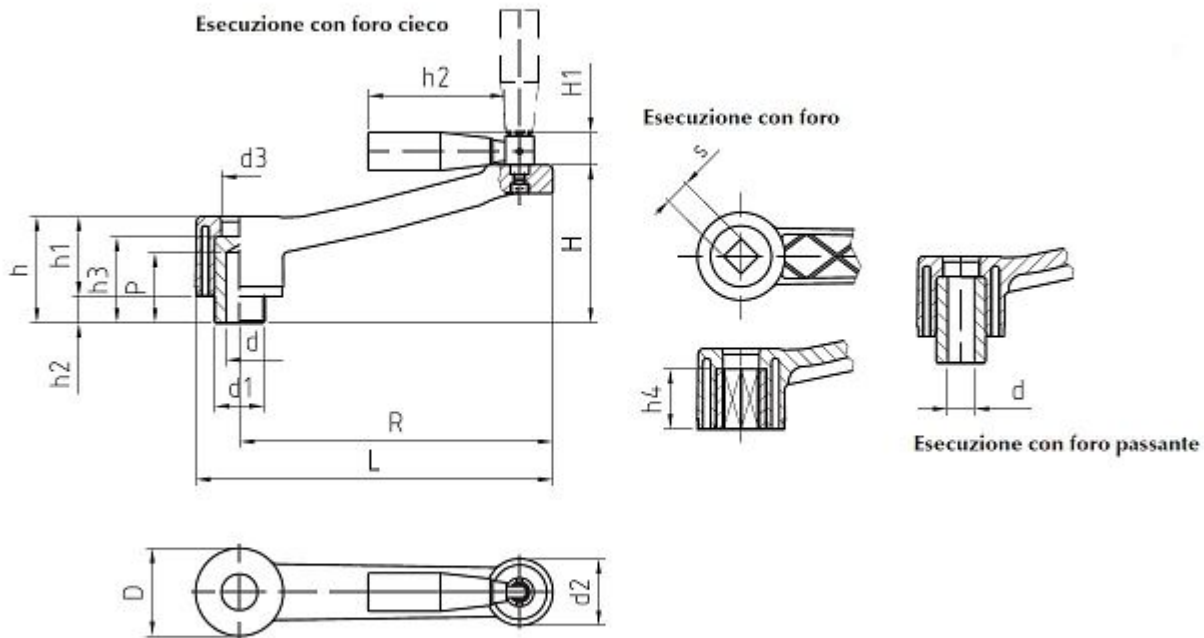
Characteristics

Main Part Material: Black Technopolymer, fiberglass-reinforced, solvents, oils, greases and other chemical agents proof

Metallic Part Material & Finishing: Zinc Plated Steel Hub, Blind Hole

Other plastic components: Anodized aluminum selfadhesive central cover, to be applied after mounting

Code	D	d1	d2	d3	dH9	H	H1	h	h1	h2	h3	L	m	R	Weight gr.	Packing Pcs.
B1MLC12810	45	22	35	18	10	60	72	52	42	10	37	151	8	128	270	1
B1MLC12812	45	22	35	18	12	60	72	52	42	10	37	151	8	128	264	1
B1MLC14810	45	22	35	18	10	65	72	52	42	10	37	171	8	148	276	1
B1MLC14814	45	22	35	18	14	65	72	52	42	10	37	171	8	148	272	1
B1MLC14816	45	22	35	18	16	65	72	52	42	10	37	171	8	148	270	1



Characteristics

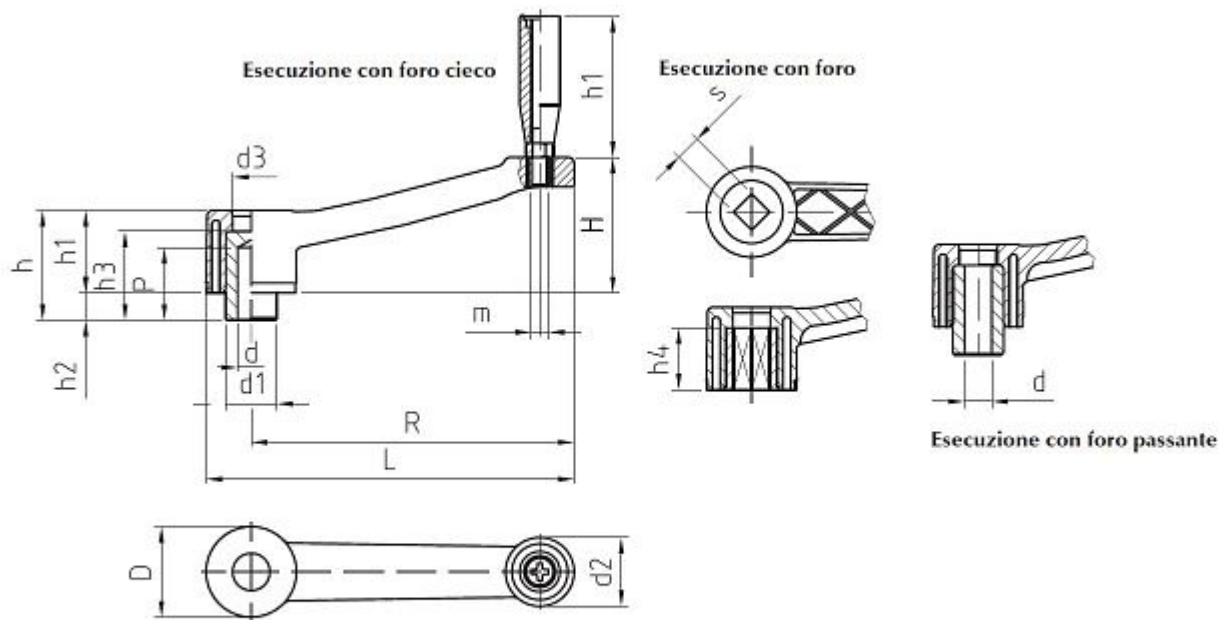
Main Part Material: Black Technopolymer, fiberglass-reinforced, solvents, oils, greases and other chemical agents proof

Metallic Part Material & Finishing: Zinc Plated Steel Hub, Blind Hole

Other plastic components: Anodized aluminum selfadhesive central cover, to be applied after mounting

Specific Features: Collapsible Handle

Code	D	d1	d2	d3	dH9	H	H1	H2	h	h1	h2	h3	L	R	Weight gr.	Packing Pcs.
B1MLCT12810	45	22	35	18	10	60	15	65	52	42	10	37	151	128	282	1
B1MLCT12812	45	22	35	18	12	60	15	65	52	42	10	37	151	128	278	1
B1MLCT14810	45	22	35	18	10	65	15	65	52	42	10	37	171	148	288	1
B1MLCT14814	45	22	35	18	14	65	15	65	52	42	10	37	171	148	284	1
B1MLCT14816	45	22	35	18	16	65	15	65	52	42	10	37	171	148	282	1



Characteristics

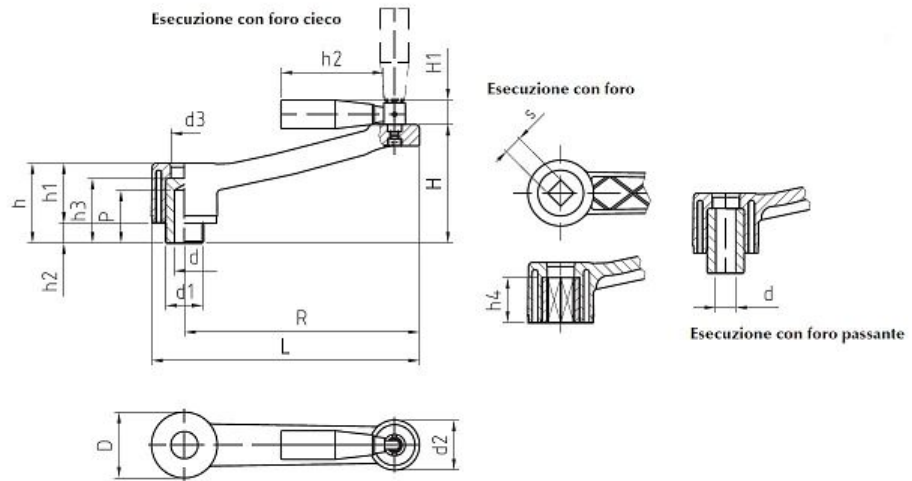
Main Part Material: Black Technopolymer, fiberglass-reinforced, solvents, oils, greases and other chemical agents proof

Metallic Part Material & Finishing: Zinc Plated Steel Hub, Thru-Hole

Other plastic components: Anodized aluminum selfadhesive central cover, to be applied after mounting

Code	D	d1	d2	d3	dH9	H	H1	h	h1	h2	h3	L	m	R	Weight gr.	Packing Pcs.
B1MLP12810	45	22	35	18	10	60	72	52	42	10	37	151	8	128	238	1
B1MLP12812	45	22	35	18	12	60	72	52	42	10	37	151	8	128	234	1
B1MLP14814	45	22	35	18	14	65	72	52	42	10	37	171	8	148	244	1
B1MLP14816	45	22	35	18	16	65	72	52	42	10	37	171	8	148	240	1

B1c Operating Components - SERIES **MLPT** Hand Crank, Collapsible Grip, Thru-Hole



Characteristics

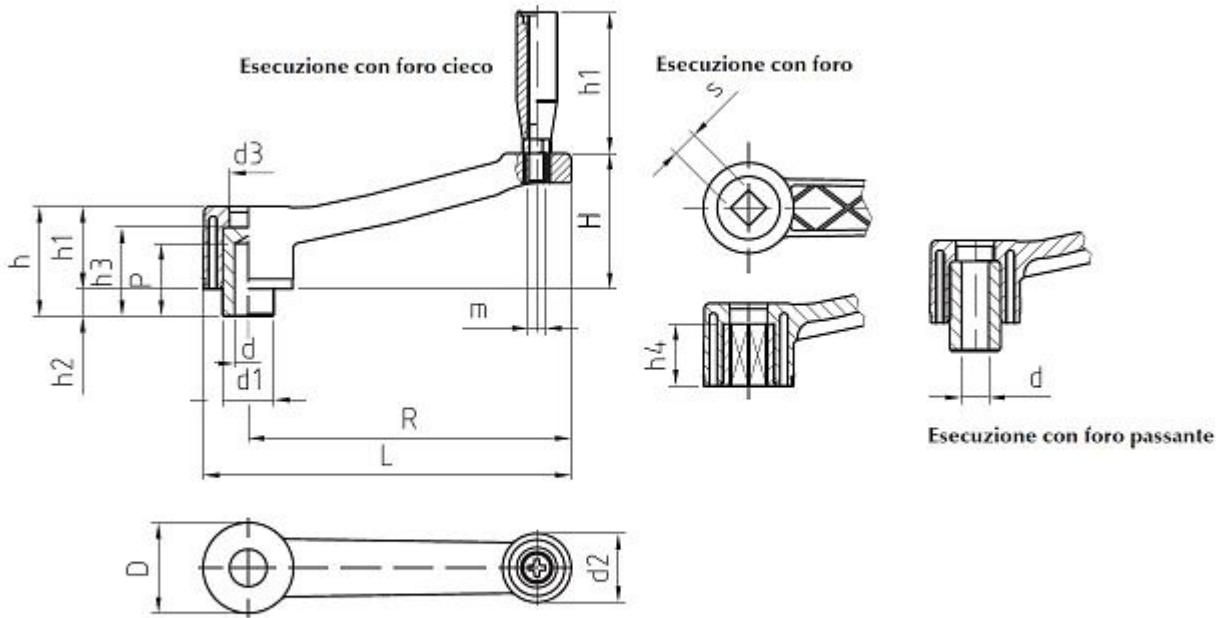
Main Part Material: Black Technopolymer, fiberglass-reinforced, solvents, oils, greases and other chemical agents proof

Metallic Part Material & Finishing: Zinc Plated Steel Hub, Thru-Hole

Other plastic components: Anodized aluminum selfadhesive central cover, to be applied after mounting

Specific Features: Collapsible Handle

Code	D	d1	d2	d3	dH9	H	H1	H2	h	h1	h2	h3	L	R	Weight gr.	Packing Pcs.
B1MLPT12810	45	22	35	18	10	60	15	65	52	42	10	37	151	128	250	1
B1MLPT12812	45	22	35	18	12	60	15	65	52	42	10	37	151	128	246	1
B1MLPT14814	45	22	35	18	14	65	15	65	52	42	10	37	171	148	256	1
B1MLPT14816	45	22	35	18	16	65	15	65	52	42	10	37	171	148	252	1



Characteristics

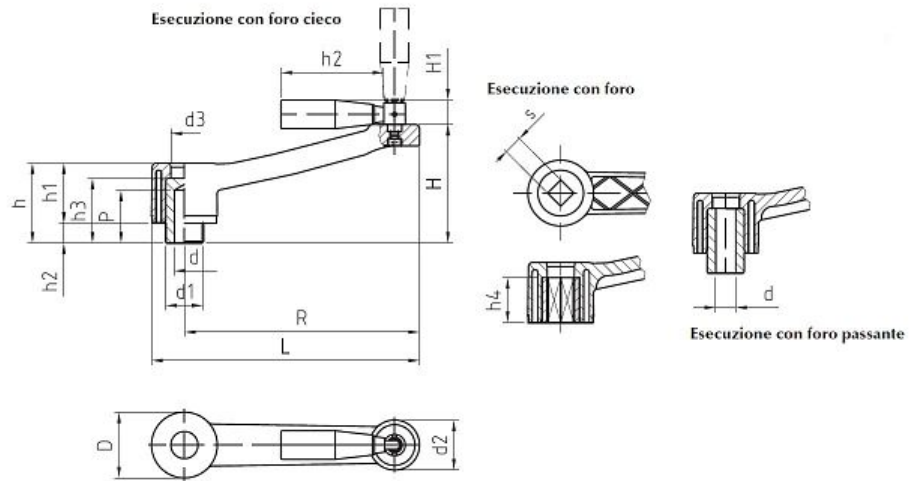
Main Part Material: Black Technopolymer, fiberglass-reinforced, solvents, oils, greases and other chemical agents proof

Metallic Part Material & Finishing: Zinc Plated Steel Hub, Square Thru-Hole

Other plastic components: Anodized aluminum selfadhesive central cover, to be applied after mounting

Code	D	d1	d2	d3	H	H1	h	h1	h2	h4	L	m	R	S	H11	Weight gr.	Packing Pcs.
B1MLQP12810	45	22	35	18	60	72	52	42	10	27	151	8	128	10		211	1
B1MLQP12812	45	22	35	18	60	72	52	42	10	27	151	8	128	12		208	1
B1MLQP12814	45	22	35	18	60	72	52	42	10	27	151	8	128	14		205	1
B1MLQP14812	45	22	35	18	65	72	52	42	10	27	171	8	148	12		217	1
B1MLQP14814	45	22	35	18	65	72	52	42	10	27	171	8	148	14		214	1
B1MLQP14817	45	22	35	18	65	72	52	42	10	27	171	8	148	17		211	1

B1c Operating Components - SERIES **MLQT** Hand Crank, Collapsible Grip, Square Thru-Hole



Characteristics

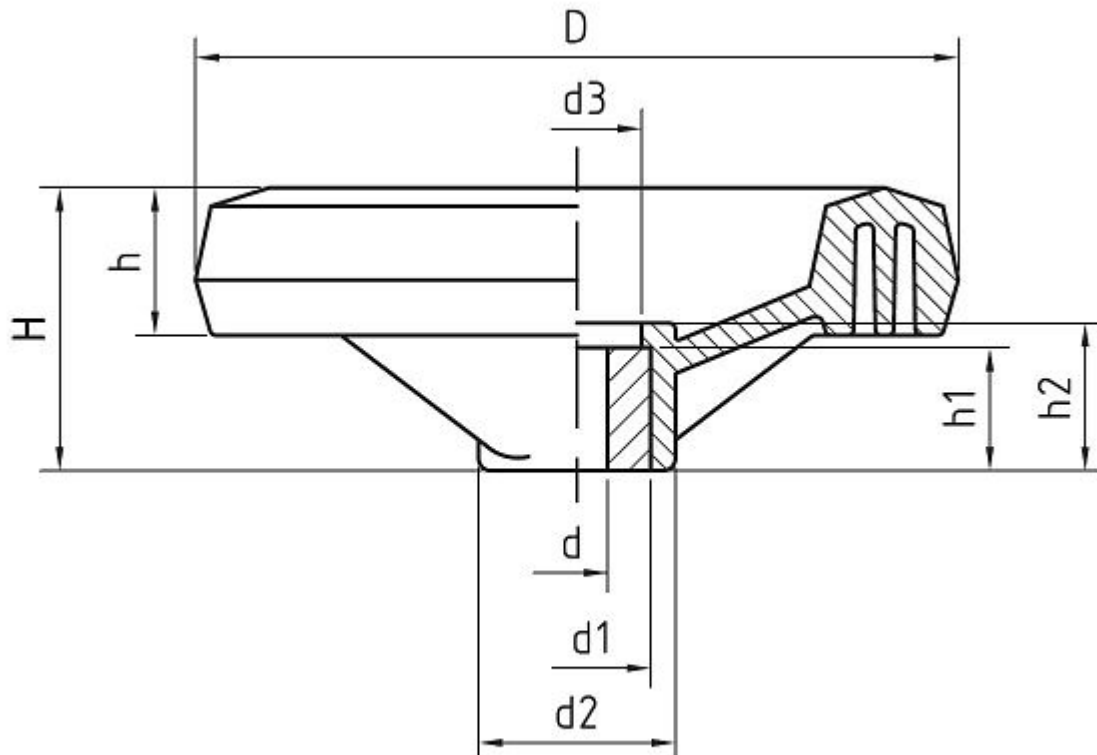
Main Part Material: Black Technopolymer, fiberglass-reinforced, solvents, oils, greases and other chemical agents proof

Metallic Part Material & Finishing: Zinc Plated Steel Hub, Square Thru-Hole

Other plastic components: Anodized aluminum selfadhesive central cover, to be applied after mounting

Specific Features: Collapsible Handle

Code	D	d1	d2	d3	H	H1	H2	h	h1	h2	h3	h4	L	R	S	H11	Weight gr.	Packing Pcs.
B1MLQT12810	45	22	35	18	60	15	65	52	42	10	27	151	128	10		223	1	
B1MLQT12812	45	22	35	18	60	15	65	52	42	10	27	151	128	12		220	1	
B1MLQT12814	45	22	35	18	60	15	65	52	42	10	27	151	128	14		217	1	
B1MLQT14812	45	22	35	18	65	15	65	52	42	10	27	171	148	12		217	1	
B1MLQT14814	45	22	35	18	65	15	65	52	42	10	27	171	148	14		226	1	
B1MLQT14817	45	22	35	18	65	15	65	52	42	10	27	171	148	17		223	1	



Characteristics

Main Part Material: Black Technopolymer, fiberglass-reinforced, solvents, oils, greases and other chemical agents proof

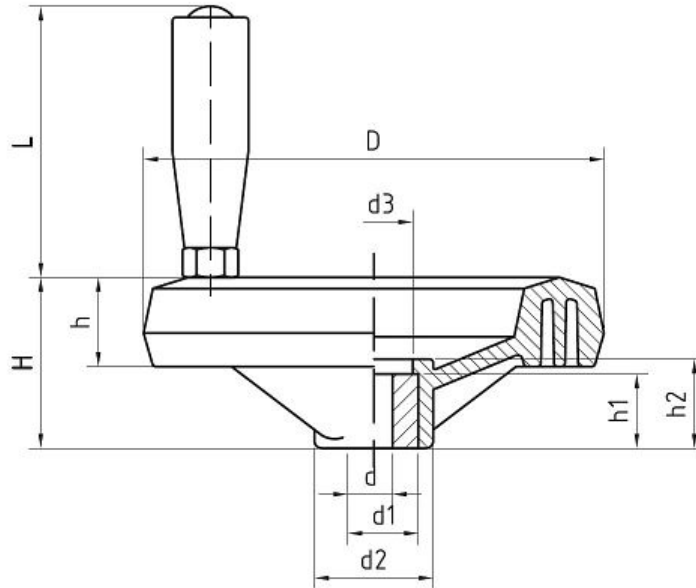
Metallic Part Material & Finishing: Zinc Plated Steel Hub with Standard Hole

Other plastic components: Anodized aluminum selfadhesive central cover, to be applied after mounting

Code	D	d1	d2	d3	dH9	H	h	h1	h2	Weight gr.	Packing Pcs.
B1VF08008	80	18	24	15	8	35	18	17	23	75	1
B1VF08010	80	18	24	15	10	35	18	17	23	71	1
B1VF10010	100	18	24	15	10	37	20	17	23	115	1
B1VF10012	100	18	24	15	12	37	20	17	23	110	1
B1VF12610	126	24	32	21	10	46	24	21	25	242	1
B1VF12612	126	24	32	21	12	46	24	21	25	232	1
B1VF12614	126	24	32	21	14	46	24	21	25	222	1
B1VF12615	126	24	32	21	15	46	24	21	25	222	1
B1VF16010	160	26	34	25	10	47	25	25	31	322	1
B1VF16012	160	26	34	25	12	47	25	25	31	319	1

Code	D	d1	d2	d3	dH9	H	h	h1	h2	Weight gr.	Packing Pcs.
B1VF16014	160	26	34	25	14	47	25	25	31	316	1
B1VF16016	160	26	34	25	16	47	25	25	31	308	1
B1VF20010	200	30	50	28	10	62	28	28	34	628	1
B1VF20016	200	30	50	28	16	62	28	28	34	596	1
B1VF20020	200	30	50	28	20	62	28	28	34	576	1

B1c Operating Components - SERIES **VFG** Bar-Pattern Handwheel Revolving Grip



Characteristics

Main Part Material: Black Technopolymer, fiberglass-reinforced, solvents, oils, greases and other chemical agents proof

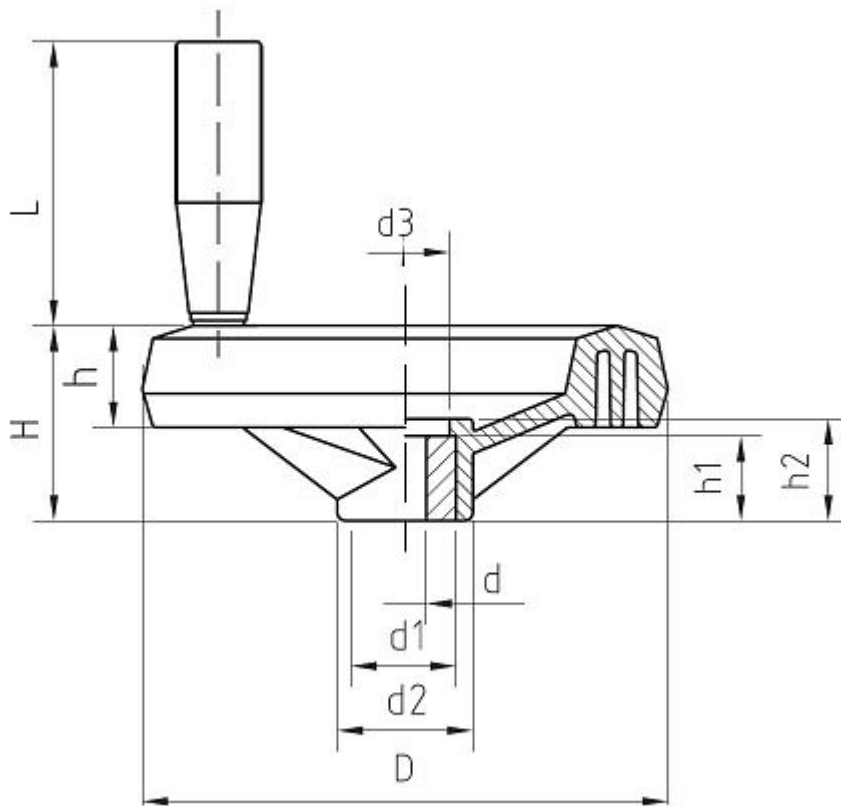
Metallic Part Material & Finishing: Zinc Plated Steel Hub with Standard Hole

Other plastic components: Anodized aluminum selfadhesive central cover, to be applied after mounting

Other components: Revolving Handle with brass bushing

Code	D	d1	d2	d3	dH9	H	h	h1	h2	L	Weight gr.	Packing Pcs.
B1VFG08008	80	18	24	15	8	35	18	17	23	50	110	1
B1VFG08010	80	18	24	15	10	35	18	17	23	50	106	1
B1VFG10010	100	18	24	15	10	37	20	17	23	50	150	1
B1VFG10012	100	18	24	15	12	37	20	17	23	50	145	1
B1VFG12610	126	24	32	21	10	46	24	21	25	70	296	1
B1VFG12612	126	24	32	21	12	46	24	21	25	70	290	1
B1VFG12614	126	24	32	21	14	46	24	21	25	70	284	1
B1VFG12615	126	24	32	21	15	46	24	21	25	70	284	1
B1VFG16010	160	26	34	25	10	47	25	25	31	85	443	1
B1VFG16012	160	26	34	25	12	47	25	25	31	85	435	1
B1VFG16014	160	26	34	25	14	47	25	25	31	85	427	1
B1VFG16016	160	26	34	25	16	47	25	25	31	85	419	1
B1VFG20010	200	30	50	28	10	62	28	28	34	85	723	1
B1VFG20016	200	30	50	28	16	62	28	28	34	85	689	1
B1VFG20020	200	30	50	28	20	62	28	28	34	85	665	1

B1c Operating Components - SERIES **VFIG** Bar-Pattern Handwheel Revolving Grip



Characteristics

Main Part Material: Black Technopolymer, fiberglass-reinforced, solvents, oils, greases and other chemical agents proof

Metallic Part Material & Finishing: Zinc Plated Steel Hub with Standard Hole

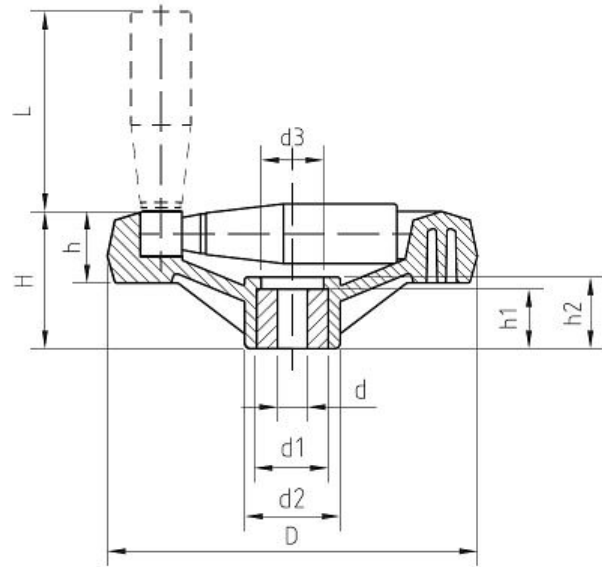
Other plastic components: Anodized aluminum selfadhesive central cover, to be applied after mounting

Other components: Revolving Handle

Code	D	d	d1	d2	d3	H	h	h1	h2	L	Weight gr.	Packing Pcs.
B1VFIG08008	80	8	18	24	15	35	18	17	23	50	110	1
B1VFIG08010	80	10	18	24	15	35	18	17	23	50	106	1
B1VFIG10010	100	10	18	24	15	37	20	17	23	50	150	1
B1VFIG10012	100	12	18	24	15	37	20	17	23	50	145	1
B1VFIG12610	126	10	24	32	21	46	24	21	25	70	296	1
B1VFIG12612	126	12	24	32	21	46	24	21	25	70	290	1
B1VFIG12614	126	14	24	32	21	46	24	21	25	70	284	1
B1VFIG12615	126	15	24	32	21	46	24	21	25	70	284	1

Code	D	d	d1	d2	d3	H	h	h1	h2	L	Weight gr.	Packing Pcs.
B1VFIG16010	160	10	26	34	25	47	25	25	31	85	443	1
B1VFIG16012	160	12	26	34	25	47	25	25	31	85	435	1
B1VFIG16014	160	14	26	34	25	47	25	25	31	85	427	1
B1VFIG16016	160	16	26	34	25	47	25	25	31	85	419	1
B1VFIG20010	200	10	30	50	28	62	28	28	34	85	723	1
B1VFIG20016	200	16	30	50	28	62	28	28	34	85	689	1
B1VFIG20020	200	20	30	50	28	62	28	28	34	85	665	1

B1c Operating Components - SERIES VFT Bar-Pattern Handwheel Snap Handle Collapsible



Characteristics

Main Part Material: Black Technopolymer, fiberglass-reinforced, solvents, oils, greases and other chemical agents proof

Metallic Part Material & Finishing: Zinc Plated Steel Hub with Standard Hole

Other plastic components: Anodized aluminum selfadhesive central cover, to be applied after mounting

Other components: Snap Handle, Collapsible

Code	D	d	d1	d2	d3	H	h	h1	h2	L	Weight gr.	Packing Pcs.
B1VFT08008	80	8	18	24	15	35	18	17	23	46	103	1
B1VFT08010	80	10	18	24	15	35	18	17	23	46	99	1
B1VFT10010	100	10	18	24	15	37	20	17	23	46	143	1
B1VFT10010	100	10	18	24	15	37	20	17	23	46	138	1
B1VFT12610	126	10	24	32	21	46	24	21	25	65	308	1
B1VFT12612	126	12	24	32	21	46	24	21	25	65	294	1
B1VFT12614	126	14	24	32	21	46	24	21	25	65	288	1
B1VFT12615	126	15	24	32	21	46	24	21	25	65	288	1
B1VFT16010	160	10	26	34	25	47	25	25	31	65	400	1
B1VFT16012	160	12	26	34	25	47	25	25	31	65	394	1
B1VFT16014	160	14	26	34	25	47	25	25	31	65	388	1
B1VFT16016	160	16	26	34	25	47	25	25	31	65	378	1
B1VFT20010	200	10	30	50	28	62	28	28	34	75	709	1
B1VFT20016	200	16	30	50	28	62	28	28	34	75	677	1
B1VFT20020	200	20	30	50	28	62	28	28	34	75	651	1