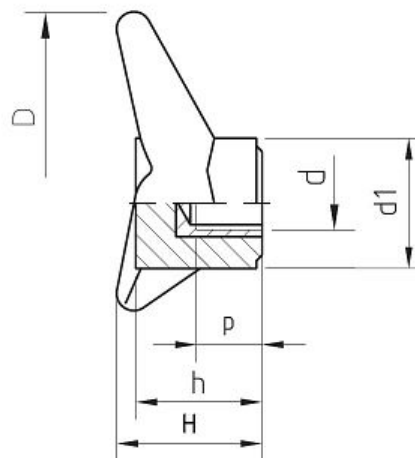
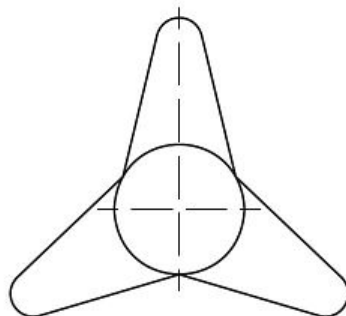


B1b Clamping Components - SERIES **V3B** Grip, 3 Points, Threaded Blind Insert



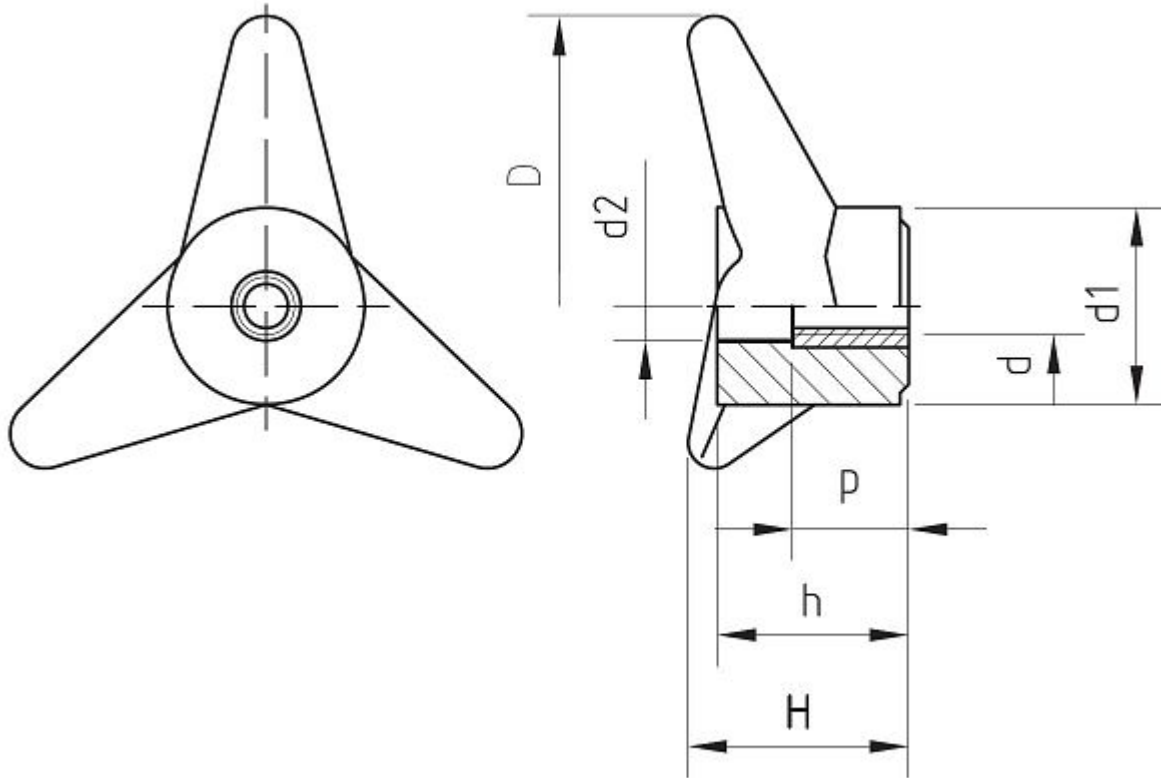
Characteristics

Main Part Material: Black Phenoplast, solvents, oils, greases and other chemical agents proof

Metallic Part Material & Finishing: Brass Insert, Threaded Blind Hole

Code	D	d	d1	H	h	P	Weight gr.	Packing Pcs.
B1V3B6006	60	06MA	19	24	21	12	19	20
B1V3B6008	60	08MA	19	24	21	16	19	20
B1V3B6010	60	10MA	19	24	21	16	22	20
B1V3B7008	70	08MA	22	26	23	16	27	20
B1V3B7010	70	10MA	22	26	23	16	30	20
B1V3B8008	80	08MA	30	42	38	16	63	20
B1V3B8010	80	10MA	30	42	38	22	61	20
B1V3B8012	80	12MA	30	42	38	22	68	20
B1V3B9010	90	10MA	33	38	32	22	68	20
B1V3B9012	90	12MA	33	38	32	22	72	20
B1V3B9014	90	14MA	33	38	32	22	80	20
B1V3B9016	90	16MA	33	38	32	22	85	20
B1V3B10010	100	10MA	34	37	33	22	82	20
B1V3B10012	100	12MA	34	37	33	22	85	20
B1V3B10014	100	14MA	34	37	33	22	91	20
B1V3B10016	100	16MA	34	37	33	22	99	20
B1V3B12010	120	10MA	38	48	42	22	140	20
B1V3B12012	120	12MA	38	48	42	22	151	20
B1V3B12014	120	14MA	38	48	42	22	143	20
B1V3B12016	120	16MA	38	48	42	22	151	20
B1V3B14010	140	10MA	44	53	44	22	200	20
B1V3B14012	140	12MA	44	53	44	22	207	20
B1V3B14014	140	14MA	44	53	44	22	213	20
B1V3B14016	140	16MA	44	53	44	22	225	20

B1b Clamping Components - SERIES **V3BP** Grip, 3 Points, Threaded Thru-Insert



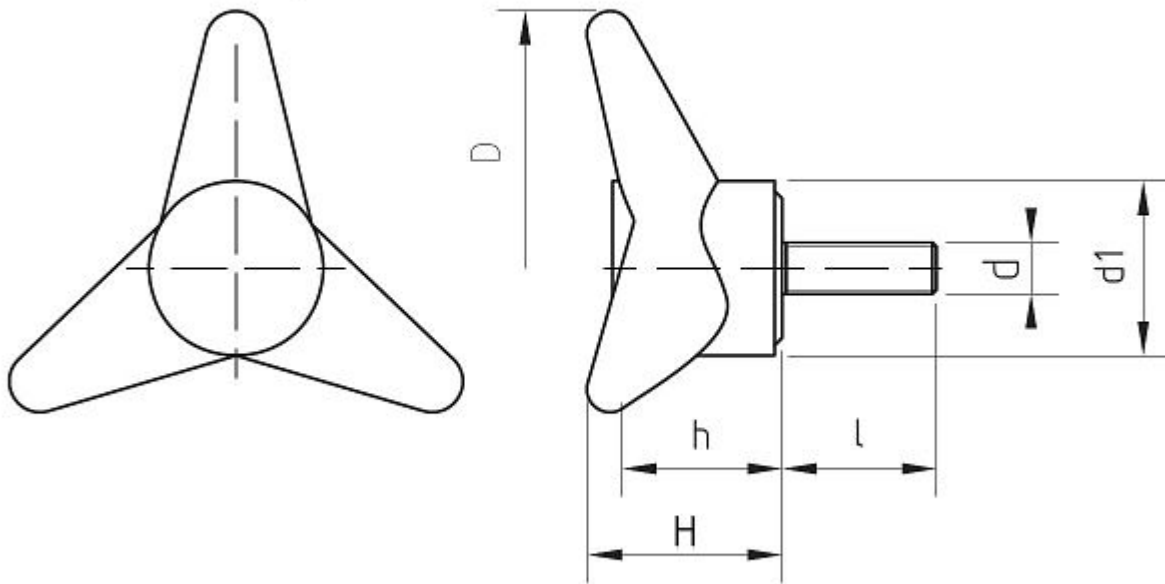
Characteristics

Main Part Material: Black Phenoplast, solvents, oils, greases and other chemical agents proof

Metallic Part Material & Finishing: Brass Insert, Threaded Thru-Hole

Code	D	d	d1	d2	H	h	P	Weight gr.	Packing Pcs.
B1V3BP8012	80	12MA	21	14	42	38	26	65	20
B1V3BP10010	100	10MA	34	12	39	35	20	90	20
B1V3BP10012	100	12MA	34	16	39	35	20	95	20
B1V3BP10014	100	14MA	34	16	39	35	20	101	20
B1V3BP12010	120	10MA	38	12	52	45	20	132	20
B1V3BP12012	120	12MA	38	14	52	45	26	137	20
B1V3BP12016	120	16MA	38	18	52	45	26	137	20
B1V3BP14014	140	14MA	44	16	56	46	20	218	20

B1b Clamping Components - SERIES V3M Grip, 3 Points, Threaded Stud



Characteristics

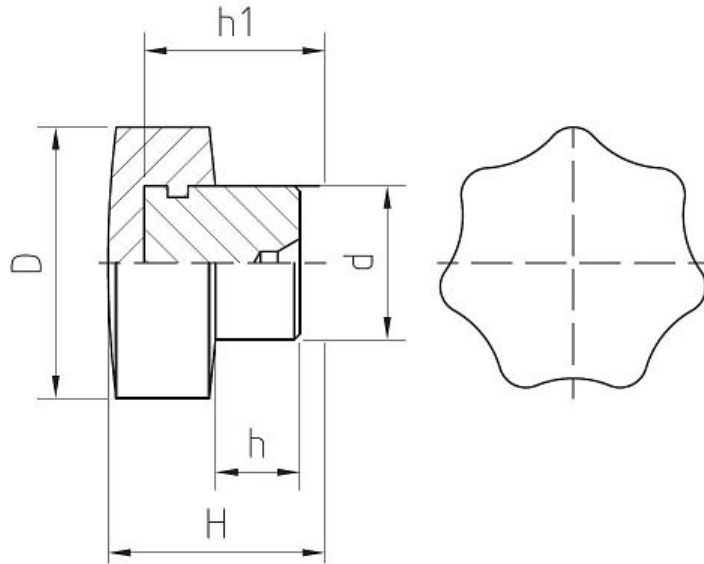
Main Part Material: Black Phenoplast, solvents, oils, greases and other chemical agents proof

Metallic Part Material & Finishing: Zinc Plated Threaded Steel Bolt

Code	D	d	d1	H	h	l	Weight gr.	Packing Pcs.
B1V3M600630	60	06MA	19	24	21	30	25	20
B1V3M600830	60	08MA	19	24	21	30	29	20
B1V3M601030	60	10MA	19	24	21	30	39	20
B1V3M700830	70	08MA	22	26	23	30	38	20
B1V3M701030	70	10MA	22	26	23	30	42	20
B1V3M800830	80	08MA	30	42	38	30	69	20
B1V3M801030	80	10MA	30	42	38	30	77	20
B1V3M801230	80	12MA	30	42	38	30	90	20
B1V3M901030	90	10MA	33	38	32	30	83	20
B1V3M901230	90	12MA	33	38	32	30	98	20
B1V3M901430	90	14MA	33	38	32	30	112	20
B1V3M1001030	100	10MA	34	37	33	30	98	20

Code	D	d	d1	H	h	l	Weight gr.	Packing Pcs.
B1V3M1001230	100	12MA	34	37	33	30	100	20
B1V3M1001430	100	14MA	34	37	33	30	115	20
B1V3M1201030	120	10MA	38	48	42	30	161	20
B1V3M1201230	120	12MA	38	48	42	30	172	20
B1V3M1201430	120	14MA	38	48	42	30	175	20
B1V3M1401030	140	10MA	44	53	44	30	220	20
B1V3M1401230	140	12MA	44	53	44	30	225	20
B1V3M1401430	140	14MA	44	53	44	30	231	20
B1V3M1401630	140	16MA	44	53	44	30	232	20

B1b Clamping Components - SERIES V7AF Star Knob, 7 Points, Steel Hub

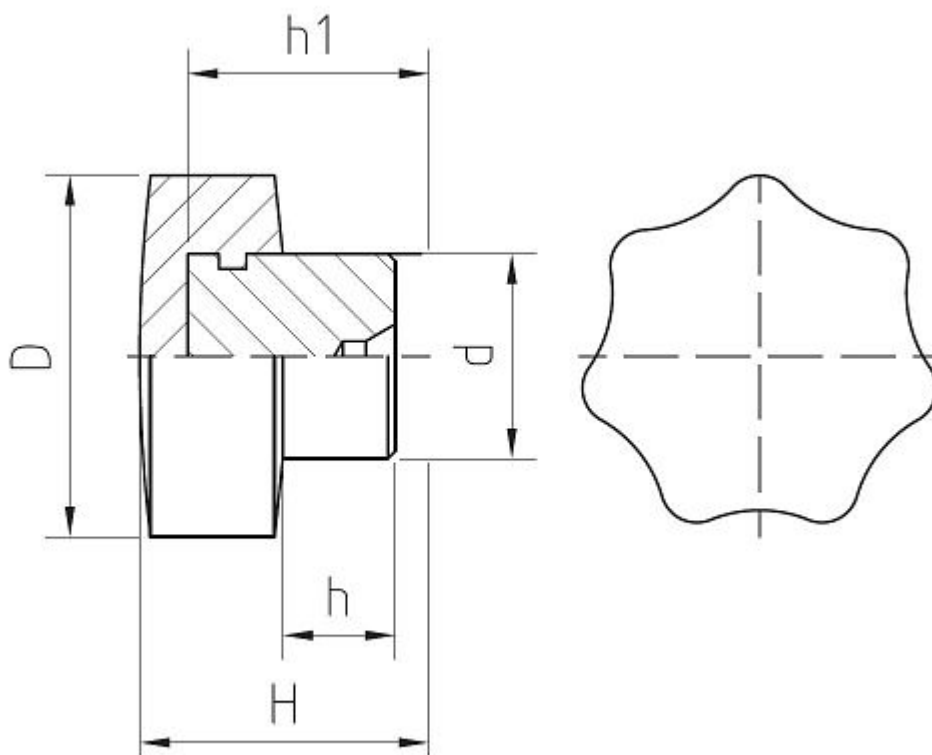


Characteristics

Main Part Material: Black Phenoplast, solvents, oils, greases and other chemical agents proof

Metallic Part Material & Finishing: Zinc Plated Steel Hub, with predrilled hole

Code	D	d	H	h	h1	Weight gr.	Packing Pcs.
B1V7AF30	30	17	23	10	20	39	20
B1V7AF40	40	21	27	11	21	82	20
B1V7AF50	50	25	35	15	28	138	20
B1V7AF60	60	28	39	18	30	189	20
B1V7AF70	70	30	42	18	32	257	20
B1V7AF80	80	32	48	22	40	350	20



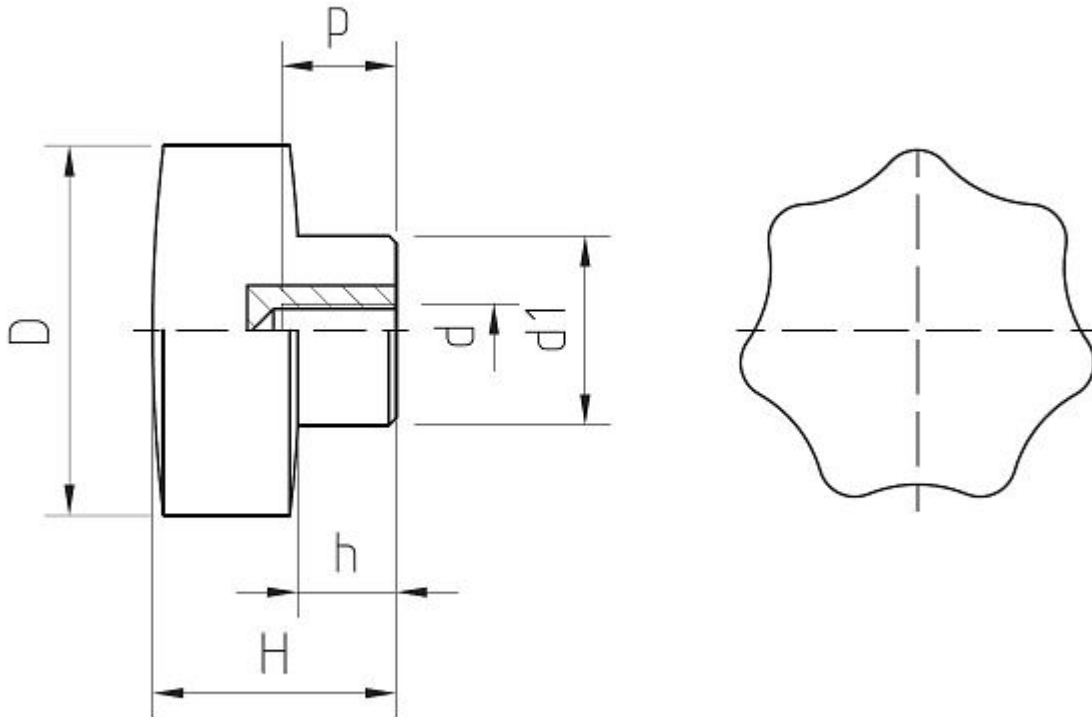
Characteristics

Main Part Material: Black Phenoplast, solvents, oils, greases and other chemical agents proof

Metallic Part Material & Finishing: Zinc Plated Brass Hub, with predrilled hole

Code	D	d	H	h	h1	Weight gr.	Packing Pcs.
B1V7AO30	30	17	23	10	20	44	20
B1V7AO40	40	21	27	11	21	75	20
B1V7AO50	50	25	35	15	28	147	20
B1V7AO60	60	28	39	18	30	204	20
B1V7AO70	70	30	42	18	32	280	20
B1V7AO80	80	32	48	22	40	384	20

B1b Clamping Components - SERIES V7B Star Knob, 7 Points, Threaded Blind Insert



Characteristics

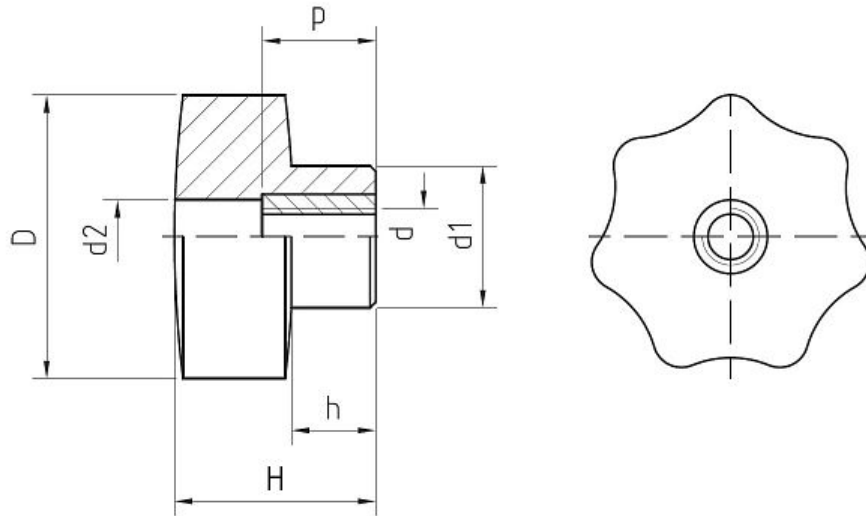
Main Part Material: Black Phenoplast, solvents, oils, greases and other chemical agents proof

Metallic Part Material & Finishing: Brass Insert, Threaded Blind Hole

Code	D	d	d1	H	h	P	Weight gr.	Packing Pcs.
B1V7B3004	30	04MA	17	23	10	8	15	20
B1V7B3005	30	05MA	17	23	10	10	15	20
B1V7B3006	30	06MA	17	23	10	12	16	20
B1V7B3008	30	08MA	17	23	10	16	17	20
B1V7B4005	40	05MA	21	27	11	10	29	20
B1V7B4006	40	06MA	21	27	11	12	30	20
B1V7B4008	40	08MA	21	27	11	16	33	20
B1V7B4010	40	10MA	21	27	11	16	33	20
B1V7B5006	50	06MA	25	35	15	12	57	20
B1V7B5008	50	08MA	25	35	15	16	59	20
B1V7B5010	50	10MA	25	35	15	22	61	20
B1V7B5012	50	12MA	25	35	15	22	68	20
B1V7B6008	60	08MA	28	39	18	16	85	20
B1V7B6010	60	10MA	28	39	18	22	88	20

Code	D	d	d1	H	h	P	Weight gr.	Packing Pcs.
B1V7B6012	60	12MA	28	39	18	22	93	20
B1V7B6014	60	14MA	28	39	18	22	98	20
B1V7B7010	70	10MA	30	42	18	22	121	20
B1V7B7012	70	12MA	30	42	18	22	127	20
B1V7B7014	70	14MA	30	42	18	22	133	20
B1V7B7016	70	16MA	30	42	18	22	138	20
B1V7B8010	80	10MA	32	53	28	22	181	20
B1V7B8012	80	12MA	32	53	28	22	186	20
B1V7B8014	80	14MA	32	53	28	22	186	20
B1V7B8016	80	16MA	32	53	28	22	187	20

B1b Clamping Components - SERIES V7BP Star Knob, 7 Points, Threaded Thru-Insert



Characteristics

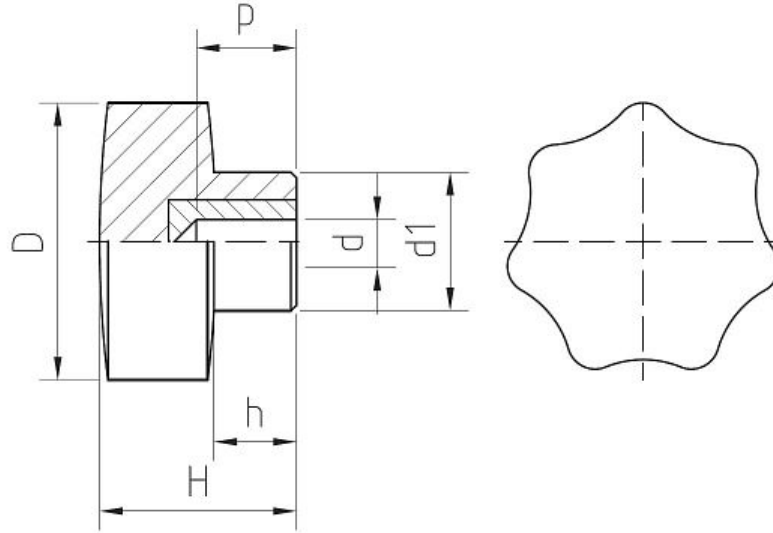
Main Part Material: Black Phenoplast, solvents, oils, greases and other chemical agents proof

Metallic Part Material & Finishing: Brass Insert, Threaded Thru-Hole

Code	D	d	d1	d2	H	h	P	Weight gr.	Packing Pcs.
B1V7BP3004	30	04MA	17	10	23	10	15	13	20
B1V7BP3005	30	05MA	17	10	23	10	15	14	20
B1V7BP3006	30	06MA	17	10	23	10	15	15	20
B1V7BP3008	30	08MA	17	10	23	10	15	16	20
B1V7BP4006	40	06MA	21	10,5	27	11	20	35	20
B1V7BP4008	40	08MA	21	10,5	27	11	20	31	20
B1V7BP4010	40	10MA	21	10,5	27	11	20	32	20
B1V7BP5008	50	08MA	25	12,5	35	15	20	57	20
B1V7BP5010	50	10MA	25	12,5	35	15	20	58	20
B1V7BP5012	50	12MA	25	12,5	35	15	20	61	20
B1V7BP6008	60	08MA	28	14	39	18	20	73	20
B1V7BP6010	60	10MA	28	14	39	18	20	82	20
B1V7BP6012	60	12MA	28	14	39	18	20	85	20
B1V7BP6014	60	14MA	28	14	39	18	20	79	20
B1V7BP7010	70	10MA	30	19	42	18	26	113	20
B1V7BP7012	70	12MA	30	19	42	18	26	116	20
B1V7BP7014	70	14MA	30	19	42	18	26	121	20
B1V7BP7016	70	16MA	30	19	42	18	26	115	20
B1V7BP8012	80	12MA	32	17	53	28	26	170	20
B1V7BP8014	80	14MA	32	17	53	28	26	175	20

Code	D	d	d1	d2	H	h	P	Weight gr.	Packing Pcs.
B1V7BP8016	80	16MA	32	17	53	28	26	167	20

B1b Clamping Components - SERIES V7L Star Knob, 7 Points, Non-Threaded Blind Insert



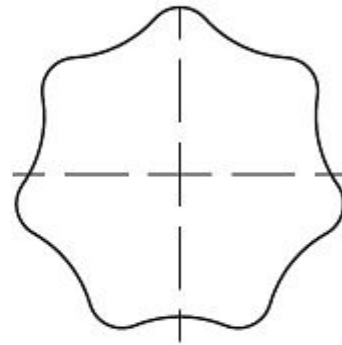
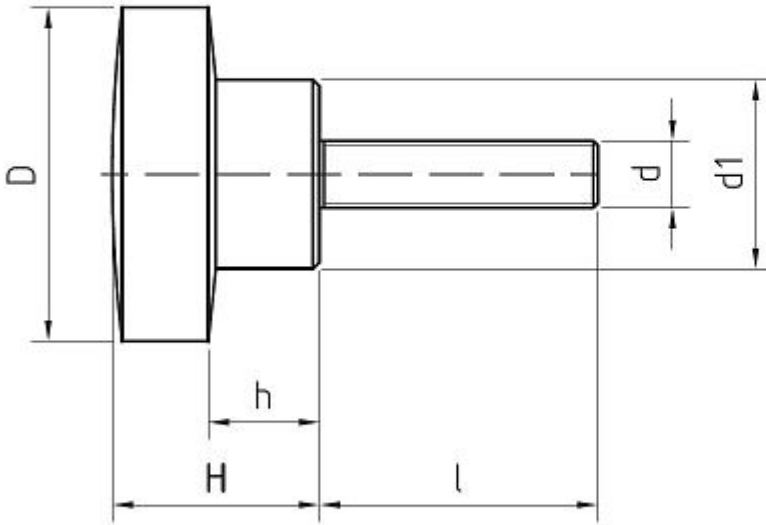
Characteristics

Main Part Material: Black Phenoplast, solvents, oils, greases and other chemical agents proof

Metallic Part Material & Finishing: Brass Insert, NonThreaded Blind Hole

Code	D	d	d1	H	h	P	Weight gr.	Packing Pcs.
B1V7L3006	30	6	17	23	10	12	8	20
B1V7L3008	30	8	17	23	10	16	9	20
B1V7L4008	40	8	21	27	11	16	37	20
B1V7L4010	40	10	21	27	11	18	37	20
B1V7L5008	50	8	25	35	15	16	66	20
B1V7L5010	50	10	25	35	15	22	73	20
B1V7L6010	60	10	28	39	18	24	103	20
B1V7L6012	60	12	28	39	18	24	103	20
B1V7L7012	70	12	30	42	18	24	142	20

B1b Clamping Components - SERIES V7M Star Knob, 7 Points, Threaded Stud



Characteristics

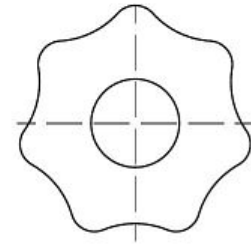
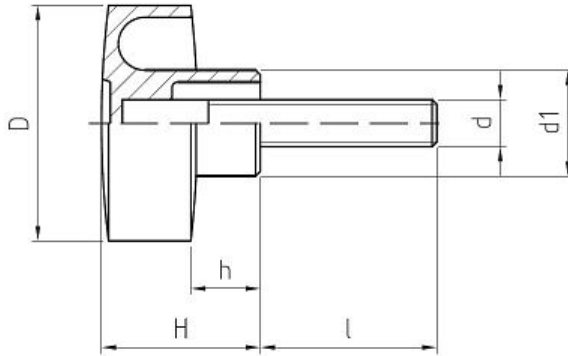
Main Part Material: Black Phenoplast, solvents, oils, greases and other chemical agents proof

Metallic Part Material & Finishing: Zinc Plated Threaded Steel Bolt

Code	D	d	d1	H	h	l	Weight gr.	Packing Pcs.
B1V7M300415	30	04MA	17	23	10	15	16	20
B1V7M300430	30	04MA	17	23	10	30	17	20
B1V7M300512	30	05MA	17	23	10	12	16	20
B1V7M300520	30	05MA	17	23	10	20	17	20
B1V7M300530	30	05MA	17	23	10	30	19	20
B1V7M300612	30	06MA	17	23	10	12	16	20
B1V7M300615	30	06MA	17	23	10	15	18	20
B1V7M300620	30	06MA	17	23	10	20	21	20
B1V7M300625	30	06MA	17	23	23	25	20	20
B1V7M300630	30	06MA	17	23	23	30	21	20

Code	D	d	d1	H	h	I	Weight gr.	Packing Pcs.
B1V7M300640	30	06MA	17	23	23	40	23	20
B1V7M300650	30	06MA	17	23	23	50	25	20
B1V7M300815	30	08MA	17	23	23	15	22	20
B1V7M300820	30	08MA	17	23	23	20	23	20
B1V7M300830	30	08MA	17	23	23	30	26	20
B1V7M300840	30	08MA	17	23	23	40	29	20
B1V7M300850	30	08MA	17	23	23	50	32	20
B1V7M300860	30	08MA	17	23	23	60	40	20
B1V7M400620	40	06MA	21	27	27	20	33	20
B1V7M400630	40	06MA	21	27	27	30	35	20
B1V7M400640	40	06MA	21	27	27	40	37	20
B1V7M400650	40	06MA	21	27	27	50	39	20
B1V7M400815	40	08MA	21	27	27	15	37	20
B1V7M400820	40	08MA	21	27	27	20	38	20
B1V7M400830	40	08MA	21	27	27	30	41	20
B1V7M400840	40	08MA	21	27	27	40	44	20
B1V7M400850	40	08MA	21	27	27	50	48	20
B1V7M400860	40	08MA	21	27	27	60	52	20
B1V7M401020	40	10MA	21	27	27	20	45	20
B1V7M401030	40	10MA	21	27	27	30	51	20
B1V7M401040	40	10MA	21	27	27	40	55	20
B1V7M401050	40	10MA	21	27	27	50	60	20
B1V7M401060	40	10MA	21	27	27	60	65	20
B1V7M500815	50	08MA	25	35	35	15	63	20
B1V7M500820	50	08MA	25	35	35	20	65	20
B1V7M500830	50	08MA	25	35	35	30	68	20
B1V7M500840	50	08MA	25	35	35	40	71	20
B1V7M500850	50	08MA	25	35	35	50	74	20
B1V7M500860	50	08MA	25	35	35	60	77	20
B1V7M501020	50	10MA	25	35	35	20	72	20
B1V7M501030	50	10MA	25	35	35	30	76	20
B1V7M501040	50	10MA	25	35	35	40	82	20
B1V7M501050	50	10MA	25	35	35	50	86	20
B1V7M501060	50	10MA	25	35	35	60	90	20
B1V7M501230	50	12MA	25	35	35	30	90	20
B1V7M501240	50	12MA	25	35	35	40	94	20
B1V7M501250	50	12MA	28	35	35	50	97	20
B1V7M600830	60	08MA	28	39	39	30	94	20
B1V7M600840	60	08MA	28	39	39	40	96	20
B1V7M600850	60	08MA	28	39	39	50	95	20
B1V7M600860	60	08MA	28	39	39	60	104	20
B1V7M601020	60	10MA	28	39	39	20	90	20
B1V7M601030	60	10MA	28	39	39	30	96	20
B1V7M601040	60	10MA	28	39	39	40	100	20
B1V7M601050	60	10MA	28	39	39	50	113	20
B1V7M601060	60	10MA	28	39	39	60	120	20
B1V7M601230	60	12MA	28	39	39	30	120	20
B1V7M601240	60	12MA	28	39	39	40	123	20
B1V7M601250	60	12MA	28	39	39	50	125	20
B1V7M601430	60	14MA	30	39	39	30	128	20
B1V7M701030	70	10MA	30	42	42	30	137	20
B1V7M701050	70	10MA	30	42	42	50	151	20
B1V7M701230	70	12MA	30	42	42	30	156	20
B1V7M701240	70	12MA	30	42	42	40	158	20
B1V7M701250	70	12MA	30	42	42	50	162	20
B1V7M701430	70	14MA	30	42	42	30	166	20
B1V7M701440	70	14MA	30	42	42	40	196	20
B1V7M701450	70	14MA	30	42	42	50	191	20
B1V7M701650	70	16MA	32	42	42	50	220	20
B1V7M801030	80	10MA	32	53	53	30	200	20
B1V7M801250	80	12MA	32	53	53	50	222	20
B1V7M801430	80	14MA	32	53	53	30	240	20
B1V7M801650	80	16MA	32	53	53	50	274	20

B1b Clamping Components - SERIES V7MN Nylon Star Knob, Threaded Stud



Characteristics

Main Part Material: Black Technopolymer, fiberglass-reinforced, solvents, oils, greases and other chemical agents proof

Metallic Part Material & Finishing: Zinc Plated Threaded Steel Bolt

Code	D	d	d1	H	h	l	Weight gr.	Packing Pcs.
B1V7MN200410	20	M04	12	11	5	10	6	20
B1V7MN200420	20	M04	12	11	5	20	6	20
B1V7MN200430	20	M04	12	11	5	30	6	20
B1V7MN200440	20	M04	12	11	5	40	6	20
B1V7MN200450	20	M04	12	11	5	50	6	20
B1V7MN200510	20	M05	12	11	5	10	7	20
B1V7MN200520	20	M05	12	11	5	20	7	20
B1V7MN200530	20	M05	12	11	5	30	7	20
B1V7MN200540	20	M05	12	11	5	40	7	20
B1V7MN200550	20	M05	12	11	5	50	7	20
B1V7MN200610	20	M06	12	11	5	10	8	20
B1V7MN200615	20	M06	12	11	5	15	8	20
B1V7MN200620	20	M06	12	11	5	20	8	20
B1V7MN200630	20	M06	12	11	5	30	9	20
B1V7MN200640	20	M06	12	11	5	40	9	20
B1V7MN200650	20	M06	12	11	5	50	9	20
B1V7MN300410	30	M04	14	22	9	10	16	20
B1V7MN300420	30	M04	14	22	9	20	16	20
B1V7MN300430	30	M04	14	22	9	30	17	20
B1V7MN300440	30	M04	14	22	9	40	17	20
B1V7MN300450	30	M04	14	22	9	50	17	20
B1V7MN300510	30	M05	14	22	9	10	17	20
B1V7MN300520	30	M05	14	22	9	20	17	20
B1V7MN300530	30	M05	14	22	9	30	17,5	20
B1V7MN300540	30	M05	14	22	9	40	17,5	20
B1V7MN300550	30	M05	14	22	9	50	18	20
B1V7MN300610	30	M06	14	22	9	10	16	20
B1V7MN300615	30	M06	14	22	9	15	16,5	20
B1V7MN300620	30	M06	14	22	9	20	17,5	20
B1V7MN300630	30	M06	14	22	9	30	18	20
B1V7MN300640	30	M06	14	22	9	40	19,5	20
B1V7MN300650	30	M06	14	22	9	50	21	20
B1V7MN300815	30	M08	14	22	9	15	22	20

Code	D	d	d1	H	h	l	Weight gr.	Packing Pcs.
B1V7MN300820	30	M08	14	22	9	20	23	20
B1V7MN300830	30	M08	14	22	9	30	25	20
B1V7MN300840	30	M08	14	22	9	40	28	20
B1V7MN300850	30	M08	14	22	9	50	30	20
B1V7MN400620	40	M06	18	26	11	20	22	20
B1V7MN400630	40	M06	18	26	11	30	24	20
B1V7MN400640	40	M06	18	26	11	40	26	20
B1V7MN400650	40	M06	18	26	11	50	28	20
B1V7MN400815	40	M08	18	26	11	15	26	20
B1V7MN400820	40	M08	18	26	11	20	27	20
B1V7MN400830	40	M08	18	26	11	30	28	20
B1V7MN400840	40	M08	18	26	11	40	32	20
B1V7MN400850	40	M08	18	26	11	50	37	20
B1V7MN400860	40	M08	18	26	11	60	40	20
B1V7MN401020	40	M10	18	26	11	20	34	20
B1V7MN401030	40	M10	18	26	11	30	42	20
B1V7MN401040	40	M10	18	26	11	40	46	20
B1V7MN401050	40	M10	18	26	11	50	49	20
B1V7MN500815	50	M08	20	32	15	15	35	20
B1V7MN500820	50	M08	20	32	15	20	38	20
B1V7MN500830	50	M08	20	32	15	30	43	20
B1V7MN500840	50	M08	20	32	15	40	47	20
B1V7MN500850	50	M08	20	32	15	50	50	20
B1V7MN501020	50	M10	20	32	15	20	50	20
B1V7MN501030	50	M10	20	32	15	30	55	20
B1V7MN501040	50	M10	20	32	15	40	61	20
B1V7MN501050	50	M10	20	32	15	50	66	20
B1V7MN501230	50	M12	20	32	15	30	75	20
B1V7MN501240	50	M12	20	32	15	40	78	20
B1V7MN501250	50	M12	20	32	15	50	84	20
B1V7MN600830	60	M08	21	34	16	30	84	20
B1V7MN600840	60	M08	21	34	16	40	90	20
B1V7MN600850	60	M08	21	34	16	50	95	20
B1V7MN601020	60	M10	21	34	16	20	87	20
B1V7MN601030	60	M10	21	34	16	30	90	20
B1V7MN601040	60	M10	21	34	16	40	95	20
B1V7MN601050	60	M10	21	34	16	50	100	20
B1V7MN601230	60	M12	21	34	16	30	80	20
B1V7MN601240	60	M12	21	34	16	40	86	20
B1V7MN601250	60	M12	21	34	16	50	94	20
B1V7MN601430	60	M14	21	34	16	30	94	20
B1V7MN601440	60	M14	21	34	16	40	98	20
B1V7MN601450	60	M14	21	34	16	50	102	20