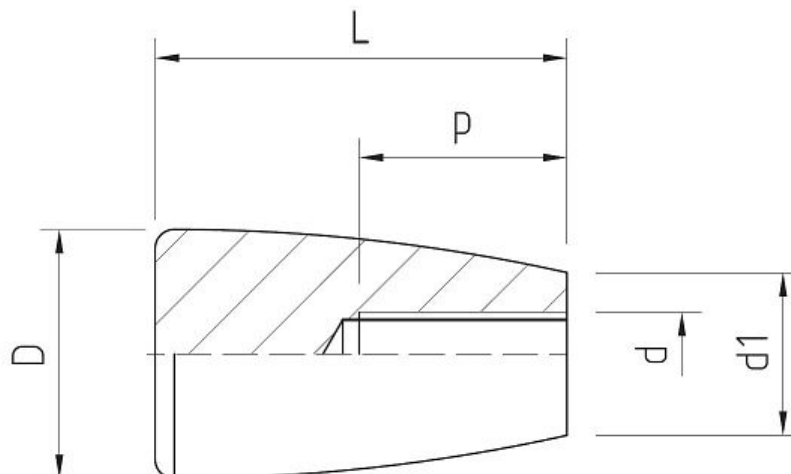


**B1a Handles and Grips** - SERIES MOR Ogival Grip, Moulded Thread

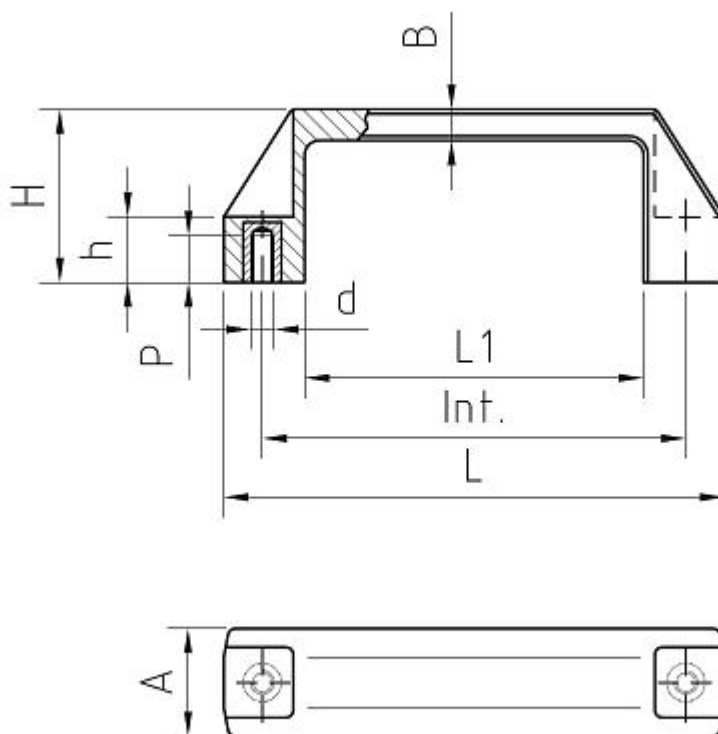


**Characteristics**

**Main Part Material:** Black Phenoplast, solvents, oils, greases and other chemical agents proof

**Standard Thread:** Moulded Thread

Code	D	d	d1	L	P	Weight gr.	Packing Pcs.
B1MOR4306	26	06MA	17	43	35	23	20
B1MOR4308	26	08MA	17	43	35	22	20
B1MOR4310	26	10MA	17	43	35	21	20
B1MOR5608	28	08MA	18	56	48	30	20
B1MOR5610	28	10MA	18	56	48	29	20
B1MOR5908	33	08MA	21	59	45	32	20
B1MOR5910	33	10MA	21	59	45	31	20
B1MOR5912	33	12MA	21	59	45	30	20
B1MOR7008	37	08MA	22	70	65	38	20
B1MOR7010	37	10MA	22	70	65	37	20
B1MOR7012	37	12MA	22	70	65	36	20
B1MOR7014	37	14MA	22	70	65	35	20



### Characteristics

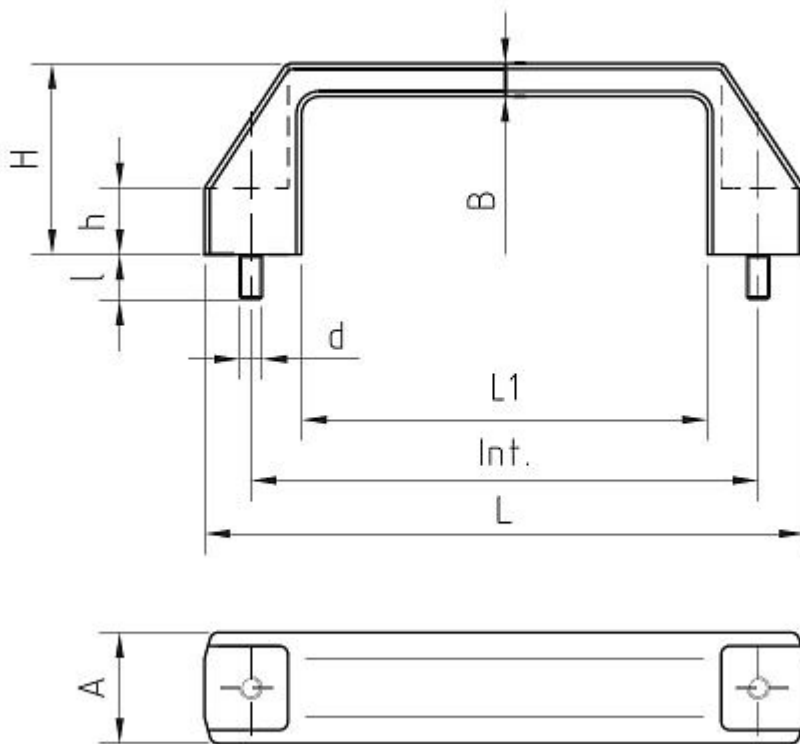
**Main Part Material:** Black Technopolymer, fiberglass-reinforced, solvents, oils, greases and other chemical agents proof

**Metallic Part Material & Finishing:** Brass Insert, Threaded Blind Hole

**Specific Features:** Suitable to any applications, working temperature up to 150° C.

Code	A	B	d	H	h	L	L1	Weight gr.	Interaxe mm	Packing Pcs.
B1MPB10705	21	7,5	05MA	37	14	107	74	36	93,5±0,5	20
B1MPB10706	21	7,5	06MA	37	14	107	74	36	93,5±0,5	20
B1MPB13605	25	8,5	05MA	42	15	136	92	57	117±0,5	20
B1MPB13606	25	8,5	06MA	42	15	136	92	57	117±0,5	20
B1MPB13608	25	8,5	08MA	42	15	136	92	60	117±0,5	20
B1MPB15108	27	8	08MA	46	18	151	104	67	132±0,5	20
B1MPB19708	28	9	08MA	51	17	197	153	90	179±1	20

**B1a Handles and Grips** - SERIES MPM Nylon U-Handle, Threaded Studs



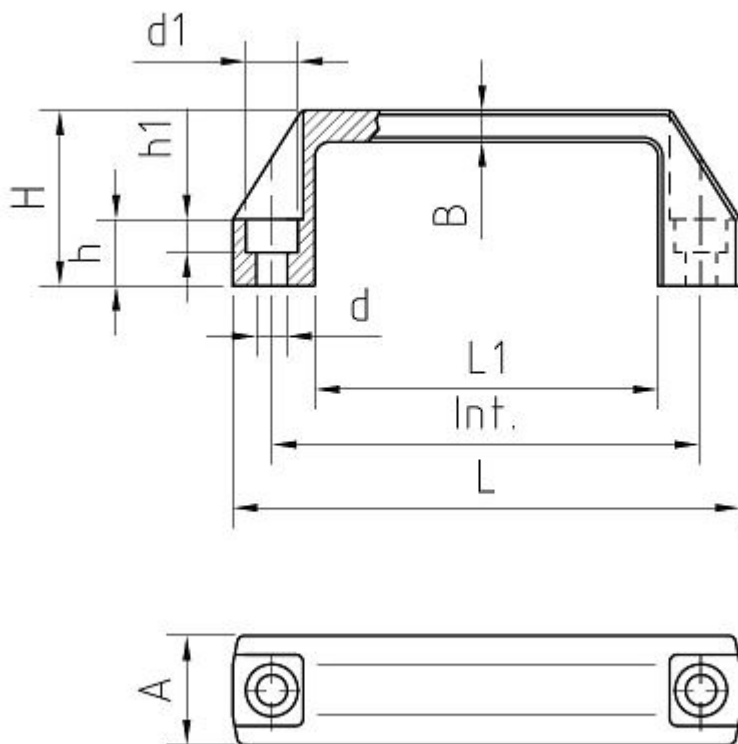
**Characteristics**

**Main Part Material:** Black Technopolymer, fiberglass-reinforced, solvents, oils, greases and other chemical agents proof

**Metallic Part Material & Finishing:** Zinc Plated Steel Bolt

**Specific Features:** Suitable to any applications, working temperature up to 150° C.

Code	A	B	d	H	h	h1	l	L	L1	Weight gr.	Interaxe mm	Packing Pcs.
B1MPM10705	21	7,5	05MA	37	14	7	10	107	74	34	93,5±0,5	20
B1MPM10706	21	7,5	06MA	37	14	7	12	107	74	37	93,5±0,5	20
B1MPM13605	25	8,5	05MA	42	15	7	10	136	92	55	117±0,5	20
B1MPM13606	25	8,5	06MA	42	15	9	12	136	92	58	117±0,5	20
B1MPM15108	27	8	08MA	46	18	9	15	151	104	72	132±0,5	20
B1MPM19708	28	9	08MA	51	17	9	15	197	153	95	179±1	20



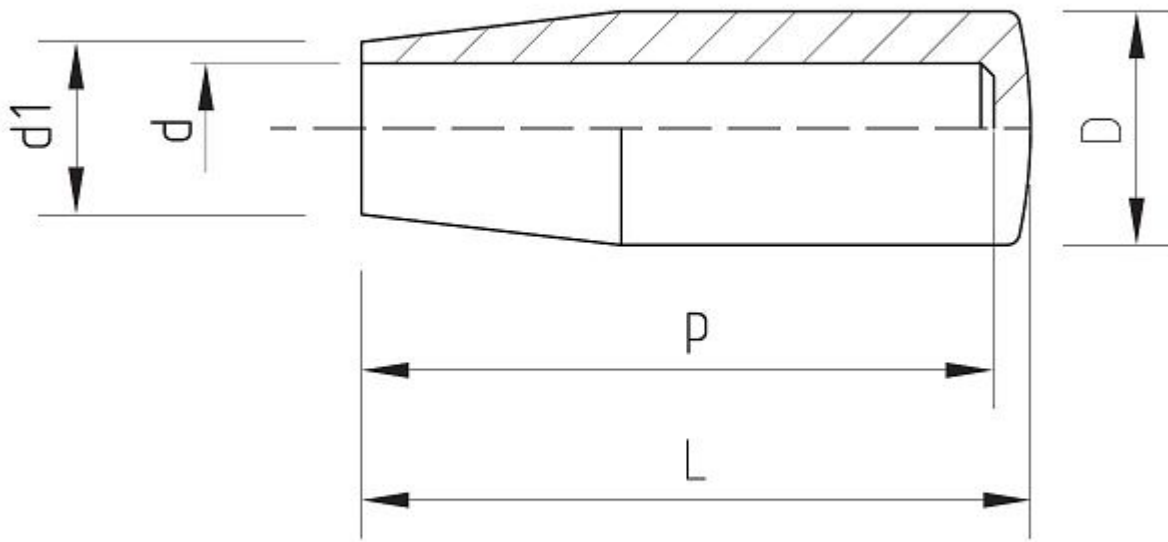
### Characteristics

**Main Part Material:** Black Technopolymer, fiberglass-reinforced, solvents, oils, greases and other chemical agents proof

**Standard Thread:** Thru-Hole; Fixing By Socket-Head Screw

**Specific Features:** Suitable to any applications, working temperature up to 150° C.

Code	A	B	d	d1	H	h	L	L1	Weight gr.	Interaxe mm	Packing Pcs.
B1MPP10711	21	7,5	6,5	11	37	14	107	74	28	93,5±0,5	20
B1MPP13611	25	8,5	6,5	11	42	15	136	92	49	117±0,5	20
B1MPP13614	25	8,5	8,5	14	42	15	136	92	47	117±0,5	20
B1MPP15114	27	8	8,5	14	46	18	151	104	54	132±0,5	20
B1MPP19714	28	9	8,5	14	51	17	197	153	77	179±1	20



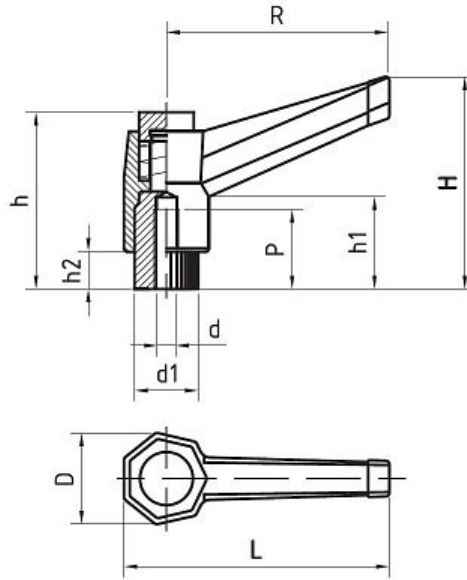
**Characteristics**

**Main Part Material:** Black Technopolymer, fiberglass-reinforced, solvents, oils, greases and other chemical agents proof

**Standard Thread:** Press in Hole Mounting

Code	D	d	d1	L	Weight gr.	Packing Pcs.
B1MPR1808	18	8	13	45	11	20
B1MPR1810	18	10	13	45	10	20
B1MPR2008	20	8	14	63	14	20
B1MPR2010	20	10	14	63	13	20
B1MPR2012	20	12	14	63	12	20
B1MPR2412	24	12	16	76	24	20
B1MPR2414	24	14	16	76	20	20
B1MPR2815	28	15	19	87	45	20
B1MPR2816	28	16	19	87	42	20

**B1a Handles and Grips** - SERIES MRB Ratchet Handle, Button Type, Threaded Insert



**Characteristics**

**Main Part Material:** Black Technopolymer, fiberglass-reinforced, solvents, oils, greases and other chemical agents proof

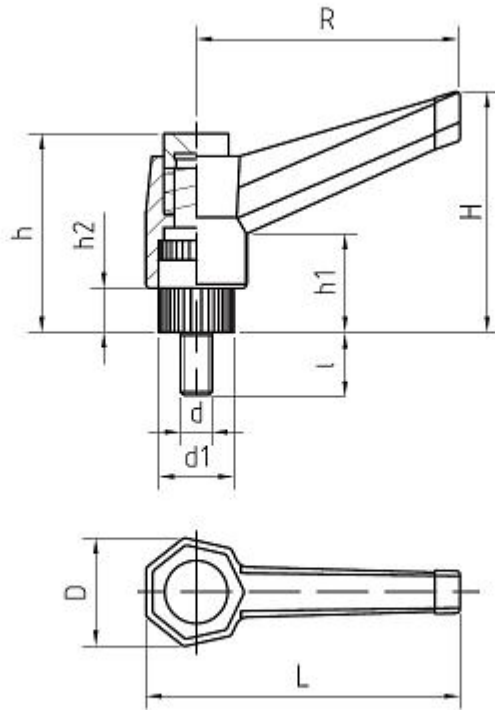
**Metallic Part Material & Finishing:** Brass Insert, Threaded Blind Hole

**Other plastic components:** Push-button in Technopolymer, black colour

**Other components:** Stainless Steel Return-Spring

Code	D	d	d1	H	h	h1	h2	L	P	R	Weight gr.	Packing Pcs.
B1MRB4004	17	04MA	12	42	33	15	15	50	8	40	12	20
B1MRB4005	17	05MA	12	42	33	15	15	50	10	40	12	20
B1MRB4006	17	06MA	12	42	33	15	15	50	12	40	12	20
B1MRB6006	22	06MA	15	42	37	14	14	70	12	60	20	20
B1MRB6008	22	08MA	15	42	37	14	14	70	16	60	22	20
B1MRB8008	27	08MA	19	59	49	20	20	95	16	80	36	20
B1MRB8010	27	10MA	19	59	49	20	20	95	22	80	41	20
B1MRB8012	27	12MA	19	59	49	20	20	95	22	80	46	20
B1MRB10012	38	12MA	25	85	60	20	20	117	22	100	76	20
B1MRB10014	38	14MA	25	85	60	20	20	117	22	100	82	20
B1MRB10016	38	16MA	25	85	60	20	20	117	22	100	93	20

**B1a Handles and Grips** - SERIES MRM Ratchet Handle, Button Type, Threaded Stud



**Characteristics**

**Main Part Material:** Black Technopolymer, fiberglass-reinforced, solvents, oils, greases and other chemical agents proof

**Metallic Part Material & Finishing:** Zinc Plated Threaded Steel Bolt

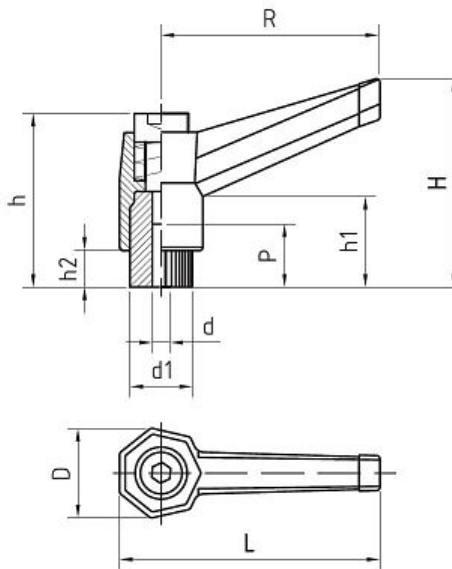
**Other plastic components:** Push-button in Technopolymer, black colour

**Other components:** Stainless Steel Return-Spring

Code	D	d	d1	H	h	h1	h2	l	L	R	Weight gr.	Packing Pcs.
B1MRM400510	17	05MA	12	42	33	15	7	10	50	40	14	20
B1MRM400520	17	05MA	12	42	33	15	7	20	50	40	16	20
B1MRM400530	17	05MA	12	42	33	15	7	30	50	40	18	20
B1MRM400615	17	06MA	12	42	33	15	7	15	50	40	16	20
B1MRM400620	17	06MA	12	42	33	15	7	20	50	40	17	20
B1MRM400625	17	06MA	12	42	33	15	7	25	50	40	18	20
B1MRM400630	17	06MA	12	42	33	15	7	30	50	40	18	20
B1MRM400815	17	08MA	12	42	33	15	7	15	50	40	19	20
B1MRM400830	17	08MA	12	42	33	15	7	30	50	40	22	20

Code	D	d	d1	H	h	h1	h2	l	L	R	Weight gr.	Packing Pcs.
B1MRM600615	22	06MA	15	42	37	14	8	15	70	60	22	20
B1MRM600620	22	06MA	15	42	37	14	8	20	70	60	22	20
B1MRM600625	22	06MA	15	42	37	14	8	25	70	60	22	20
B1MRM600630	22	06MA	15	42	37	14	8	30	70	60	24	20
B1MRM600640	22	06MA	15	42	37	14	8	40	70	60	26	20
B1MRM600650	22	06MA	15	42	37	14	8	50	70	60	28	20
B1MRM600815	22	08MA	15	42	37	14	8	15	70	60	26	20
B1MRM600820	22	08MA	15	42	37	14	8	20	70	60	26	20
B1MRM600830	22	08MA	15	42	37	14	8	30	70	60	28	20
B1MRM600840	22	08MA	15	42	37	14	8	40	70	60	32	20
B1MRM600850	22	08MA	15	42	37	14	8	50	70	60	36	20
B1MRM600860	22	08MA	15	42	37	14	8	60	70	60	40	20
B1MRM601020	22	10MA	15	42	37	14	8	20	70	60	34	20
B1MRM601030	22	10MA	15	42	37	14	8	30	70	60	40	20
B1MRM601040	22	10MA	15	42	37	14	8	40	70	60	50	20
B1MRM601050	22	10MA	15	42	37	14	8	50	70	60	60	20
B1MRM801020	27	10MA	19	59	49	20	9	20	95	80	52	20
B1MRM801030	27	10MA	19	59	49	20	9	30	95	80	56	20
B1MRM801040	27	10MA	19	59	49	20	9	40	95	80	62	20
B1MRM801050	27	10MA	19	59	49	20	9	50	95	80	68	20
B1MRM801060	27	10MA	19	59	49	20	9	60	95	80	72	20
B1MRM801220	27	12MA	19	59	49	20	9	20	95	80	62	20
B1MRM801230	27	12MA	19	59	49	20	9	30	95	80	68	20
B1MRM801240	27	12MA	19	59	49	20	9	40	95	80	76	20
B1MRM801250	27	12MA	19	59	49	20	9	50	95	80	82	20
B1MRM1001230	38	12MA	25	85	60	20	12	30	117	100	104	20
B1MRM1001240	38	12MA	25	85	60	20	12	40	117	100	113	20
B1MRM1001250	38	12MA	25	85	60	20	12	50	117	100	119	20
B1MRM1001430	38	14MA	25	85	60	20	12	30	117	100	123	20
B1MRM1001440	38	14MA	25	85	60	20	12	40	117	100	133	20
B1MRM1001450	38	14MA	25	85	60	20	12	50	117	100	142	20
B1MRM1001630	38	16MA	25	85	60	20	12	30	117	100	138	20
B1MRM1001640	38	16MA	25	85	60	20	12	40	117	100	152	20
B1MRM1001650	38	16MA	25	85	60	20	12	50	117	100	165	20

**B1a Handles and Grips** - SERIES MRVB Ratchet Handle, Screw Type, Threaded Insert



## Characteristics

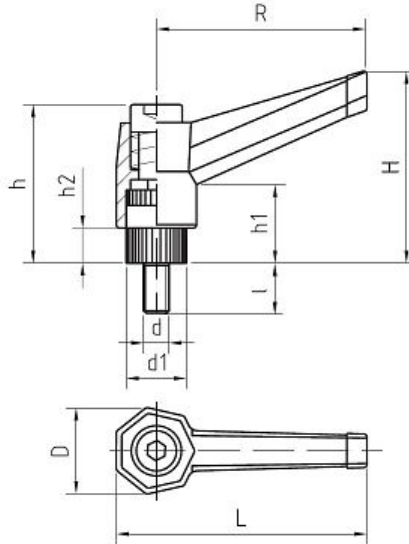
**Main Part Material:** Black Technopolymer, fiberglass-reinforced, solvents, oils, greases and other chemical agents proof

**Metallic Part Material & Finishing:** Brass Insert, Threaded Blind Hole; Adjusting Screw in Zinc Plated

**Other components:** Stainless Steel Return-Spring

Code	D	d	d1	H	h	h1	h2	L	P	R	Weight gr.	Packing Pcs.
B1MRVB4004	17	04MA	12	42	33	15	7	50	11	40	18	20
B1MRVB4005	17	05MA	12	42	33	15	7	50	11	40	18	20
B1MRVB4006	17	06MA	12	42	33	15	7	50	11	40	18	20
B1MRVB6006	22	06MA	15	42	37	14	8	70	16	60	32	20
B1MRVB6008	22	08MA	15	42	37	14	8	70	16	60	34	20
B1MRVB8008	27	08MA	19	59	49	20	9	95	16	80	76	20
B1MRVB8010	27	10MA	19	59	49	20	9	95	16	80	74	20
B1MRVB8012	27	12MA	19	59	49	20	9	95	16	80	66	20
B1MRVB10012	38	12MA	25	85	60	20	12	117	25	100	115	20
B1MRVB10014	38	14MA	25	85	60	20	12	117	20	100	120	20
B1MRVB10016	38	16MA	25	85	60	20	12	117	24	100	170	20

## B1a Handles and Grips - SERIES MRVM Ratchet Handle, Screw Type, Threaded Stud



## Characteristics

**Main Part Material:** Black Technopolymer, fiberglass-reinforced, solvents, oils, greases and other chemical agents proof

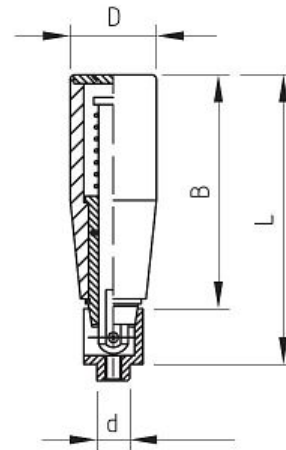
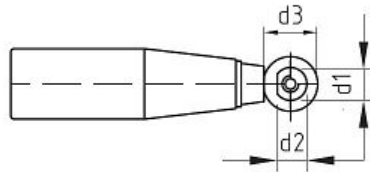
**Metallic Part Material & Finishing:** Zinc Plated Threaded Steel Bolt and Adjusting Screw

**Other components:** Stainless Steel Return-Spring

Code	D	d	d1	H	h	h1	h2	I	L	R	Weight gr.	Packing Pcs.
B1MRVM400510	17	05MA	12	42	33	15	7	10	50	40	18	20
B1MRVM400520	17	05MA	12	42	33	15	7	20	50	40	20	20
B1MRVM400530	17	05MA	12	42	33	15	7	30	50	40	22	20
B1MRVM400615	17	06MA	12	42	33	15	7	15	50	40	19	20
B1MRVM400620	17	06MA	12	42	33	15	7	20	50	40	20	20
B1MRVM400625	17	06MA	12	42	33	15	7	25	50	40	21	20
B1MRVM400630	17	06MA	12	42	33	15	7	30	50	40	22	20
B1MRVM600615	22	06MA	15	42	37	14	8	15	70	60	40	20
B1MRVM600620	22	06MA	15	42	37	14	8	20	70	60	41	20
B1MRVM600625	22	06MA	15	42	37	14	8	25	70	60	41	20
B1MRVM600630	22	06MA	15	42	37	14	8	30	70	60	42	20
B1MRVM600640	22	06MA	15	42	37	14	8	40	70	60	44	20
B1MRVM600650	22	06MA	15	42	37	14	8	50	70	60	46	20

Code	D	d	d1	H	h	h1	h2	I	L	R	Weight gr.	Packing Pcs.
B1MRVM600815	22	08MA	15	42	37	14	8	15	70	60	38	20
B1MRVM600820	22	08MA	15	42	37	14	8	20	70	60	42	20
B1MRVM600830	22	08MA	15	42	37	14	8	30	70	60	44	20
B1MRVM600840	22	08MA	15	42	37	14	8	40	70	60	46	20
B1MRVM600850	22	08MA	15	42	37	14	8	50	70	60	48	20
B1MRVM600860	22	08MA	15	42	37	14	8	60	70	60	50	20
B1MRVM601040	22	10MA	15	42	37	14	8	40	70	60	96	20
B1MRVM801020	27	10MA	19	59	49	20	9	20	95	80	70	20
B1MRVM801030	27	10MA	19	59	49	20	9	30	95	80	74	20
B1MRVM801040	27	10MA	19	59	49	20	9	40	95	80	80	20
B1MRVM801050	27	10MA	19	59	49	20	9	50	95	80	85	20
B1MRVM801220	27	12MA	19	59	49	20	9	20	95	80	94	20
B1MRVM801230	27	12MA	19	59	49	20	9	30	95	80	102	20
B1MRVM801240	27	12MA	19	59	49	20	9	40	95	80	107	20
B1MRVM801250	27	12MA	19	59	49	20	9	50	95	80	115	20
B1MRVM1001230	38	12MA	25	85	60	20	12	30	117	100	156	20
B1MRVM1001240	38	12MA	25	85	60	20	12	40	117	100	168	20
B1MRVM1001250	38	12MA	25	85	60	20	12	50	117	100	180	20
B1MRVM1001430	38	14MA	25	85	60	20	12	30	117	100	158	20
B1MRVM1001440	38	14MA	25	85	60	20	12	40	117	100	170	20
B1MRVM1001450	38	14MA	25	85	60	20	12	50	117	100	182	20
B1MRVM1001630	38	16MA	25	85	60	20	12	30	117	100	170	20
B1MRVM1001640	38	16MA	25	85	60	20	12	40	117	100	186	20
B1MRVM1001650	38	16MA	25	85	60	20	12	50	117	100	202	20

## B1a Handles and Grips - SERIES MS Snap Handle, Collapsible



### Characteristics

**Main Part Material:** Black Technopolymer, fiberglass-reinforced, solvents, oils, greases and other chemical agents proof

**Metallic Part Material & Finishing:** Zinc Plated Steel Bolt and Join

Code	A1	D	d	d1	d2	d3	H	L	N	Weight gr.	Packing Pcs.
B1MS18	46	18	03MA	7,5	6,5	12	63	60	3	35	20
B1MS20	65	20	05MA	10	10	15	87	82	5	66	20
B1MS24	77	24	05MA	10	10	15	97	93	5	100	20