

















**B1a Handles and Grips**

 <p><b>GBP</b> Wing Nut, Threaded Thru- Insert</p>	 <p><b>GC</b> Wing Nut, Threaded Blind Insert</p>	 <p><b>GM</b> Wing Nut, Threaded Stud</p>	 <p><b>IC</b> Revolving Grip, Stud with Spanner</p>
 <p><b>IE</b> Revolving Grip, Threaded Stud</p>	 <p><b>IG</b> Revolving Grip, Socket Head Screw</p>	 <p><b>M</b> U-Handle, Moulded Threads</p>	 <p><b>MAB</b> Mini-Grip, Threaded Insert</p>
 <p><b>MAM</b> Mini-Grip, Threaded Stud</p>	 <p><b>MB</b> U-Handle, Threaded Inserts</p>	 <p><b>ME</b> Pear-Shaped Grip, Moulded Thread</p>	 <p><b>MEM</b> Pear-Shaped Grip, Threaded Stud</p>
 <p><b>MFB</b> Fixed Handle, Threaded Insert</p>	 <p><b>MFM</b> Fixed Handle, Threaded Stud</p>	 <p><b>MGB</b> Inclined U-Handle, Nylon, Threaded Inserts</p>	 <p><b>MGP</b> Inclined U-Handle, Nylon, Thru-Holes</p>

**B1a Handles and Grips**



**MLB**  
U-Handle,  
Threaded



**MNB**  
Fixed Handle,  
Threaded Insert



**MNM**  
Fixed Handle,  
Threaded Stud



**MO**  
Grip, Moulded  
Thread



**MOR**  
Ogival Grip,  
Moulded Thread



**MPB**  
Nylon U-Handle,  
Threaded Inserts



**MPM**  
Nylon U-Handle,  
Threaded Studs



**MPP**  
Nylon U-Handle,  
Thru-Holes



**MPR**  
Grip, Press-In Hole



**MRB**  
Ratchet Handle,  
Button Type,  
Threaded Insert



**MRM**  
Ratchet Handle,  
Button Type,  
Threaded Stud



**MRVB**  
Ratchet Handle,  
Screw Type,  
Threaded Insert



**MRVM**  
Ratchet Handle,  
Screw Type,  
Threaded Stud



**MS**  
Snap Handle,  
Collapsible

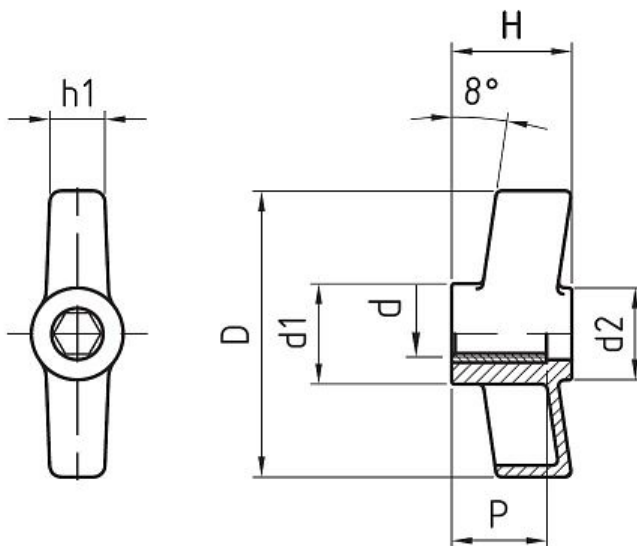


**MSE**  
Snap Handle,  
Collapsible with  
Hexagon



**MT**  
Handle with Rod

**B1a Handles and Grips** - SERIES **GBP** Wing Nut, Threaded Thru-Insert



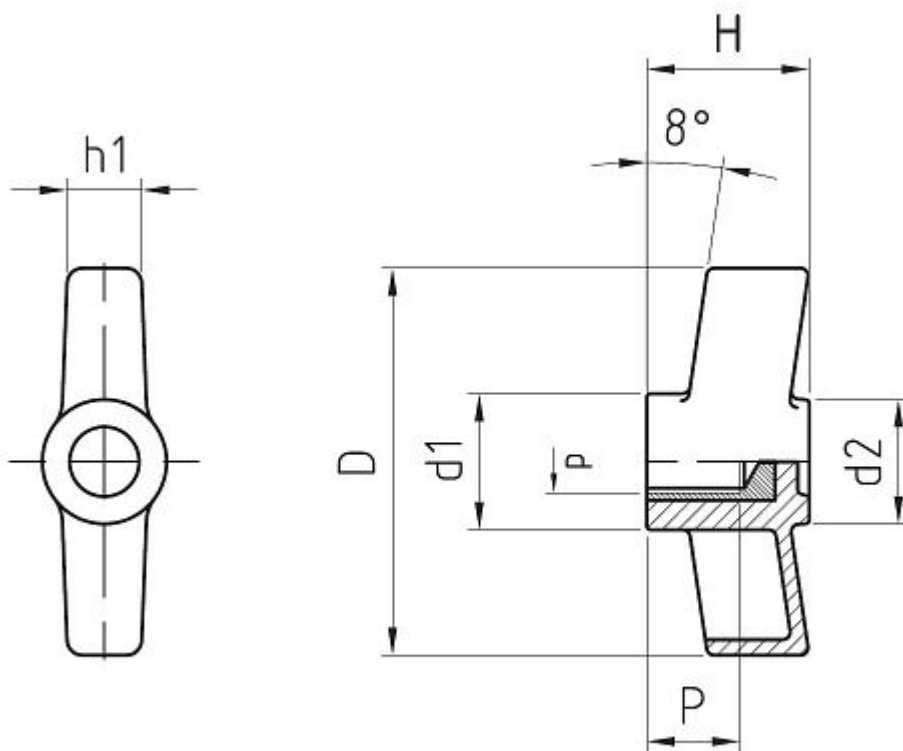
**Characteristics**

**Main Part Material:** Black Technopolymer, fiberglass-reinforced, solvents, oils, greases and other chemical agents proof

**Metallic Part Material & Finishing:** Brass Insert, Threaded Thru-Hole

Code	D	d	d1	d2	H	h1	P	Weight gr.	Packing Pcs.
B1GBP3004	30	M04	14	12	16	6	15	5,5	20
B1GBP3005	30	M05	14	12	16	6	15	6	20
B1GBP3006	30	M06	14	12	16	6	15	6,5	20
B1GBP3008	30	M08	14	12	16	6	15	7	20
B1GBP5005	50	M05	18	16	22	10	15	11,5	20
B1GBP5006	50	M06	18	16	22	10	15	12	20
B1GBP5008	50	M08	18	16	22	10	15	12,5	20
B1GBP5010	50	M10	18	16	22	10	20	14	20

**B1a Handles and Grips** - SERIES GC Wing Nut, Threaded Blind Insert



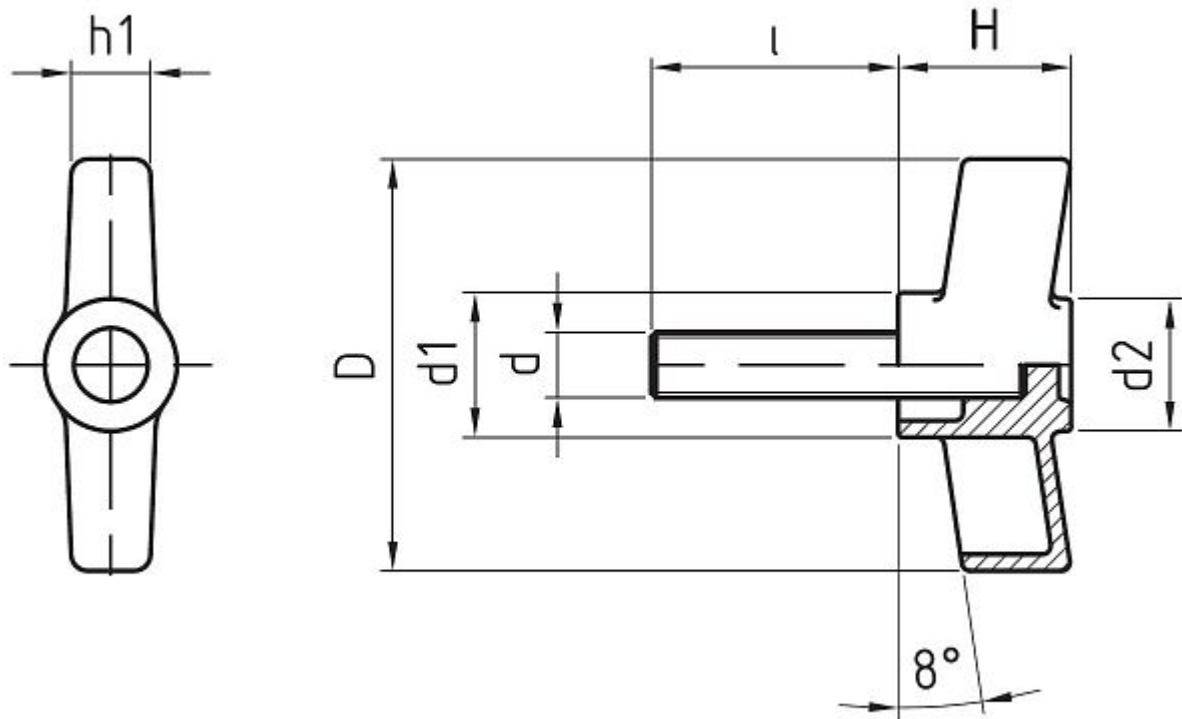
**Characteristics**

**Main Part Material:** Black Technopolymer, fiberglass-reinforced, solvents, oils, greases and other chemical agents proof

**Metallic Part Material & Finishing:** Brass Insert, Threaded Blind Hole

Code	D	d	d1	d2	H	h	P	Weight gr.	Packing Pcs.
B1GC3004	30	M04	14	12	16	6	8	6	20
B1GC3005	30	M05	14	12	16	6	10	6,5	20
B1GC3006	30	M06	14	12	16	6	12	7	20
B1GC3008	30	M08	14	12	16	6	11	7,5	20
B1GC5005	50	M05	18	16	22	10	10	12,5	20
B1GC5006	50	M06	18	16	22	10	12	13	20
B1GC5008	50	M08	18	16	22	10	11	13,5	20
B1GC5010	50	M10	18	16	22	10	16	15	20

**B1a Handles and Grips** - SERIES GM Wing Nut, Threaded Stud



**Characteristics**

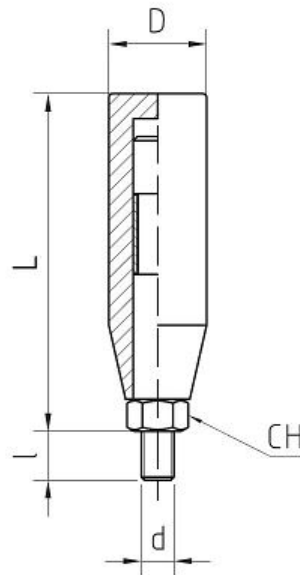
**Main Part Material:** Black Technopolymer, fiberglass-reinforced, solvents, oils, greases and other chemical agents proof

**Metallic Part Material & Finishing:** Threaded Steel Bolt

Code	D	d	d1	d2	H	h1	l	Weight gr.	Packing Pcs.
B1GM300410	30	M04	14	12	16	6	10	6,5	20
B1GM300420	30	M04	14	12	16	6	20	7	20
B1GM300430	30	M04	14	12	16	6	30	8,5	20
B1GM300440	30	M04	14	12	16	6	40	9	20
B1GM300450	30	M04	14	12	16	6	50	10	20
B1GM300510	30	M05	14	12	16	6	10	7	20
B1GM300520	30	M05	14	12	16	6	20	8	20
B1GM300530	30	M05	14	12	16	6	30	9,5	20
B1GM300540	30	M05	14	12	16	6	40	10	20
B1GM300550	30	M05	14	12	16	6	50	11	20
B1GM300610	30	M06	14	12	16	6	10	8,5	20
B1GM300615	30	M06	14	12	16	6	15	9,5	20

Code	D	d	d1	d2	H	h1	I	Weight gr.	Packing Pcs.
B1GM300620	30	M06	14	12	16	6	20	10,5	20
B1GM300630	30	M06	14	12	16	6	30	12	20
B1GM300640	30	M06	14	12	16	6	40	13	20
B1GM300650	30	M06	14	12	16	6	50	14	20
B1GM300815	30	M08	14	12	16	6	15	12	20
B1GM300820	30	M08	14	12	16	6	20	14	20
B1GM300830	30	M08	14	12	16	6	30	17	20
B1GM300840	30	M08	14	12	16	6	40	19	20
B1GM300850	30	M08	14	12	16	6	50	21	20
B1GM500510	50	M05	18	16	22	10	10	13	20
B1GM500520	50	M05	18	16	22	10	20	14	20
B1GM500530	50	M05	18	16	22	10	30	15,5	20
B1GM500540	50	M05	18	16	22	10	40	16	20
B1GM500550	50	M05	18	16	22	10	50	17	20
B1GM500615	50	M06	18	16	22	10	15	11	20
B1GM500620	50	M06	18	16	22	10	20	13	20
B1GM500630	50	M06	18	16	22	10	30	14,5	20
B1GM500640	50	M06	18	16	22	10	40	16	20
B1GM500650	50	M06	18	16	22	10	50	18	20
B1GM500815	50	M08	18	16	22	10	15	20	20
B1GM500820	50	M08	18	16	22	10	20	22	20
B1GM500830	50	M08	18	16	22	10	30	25	20
B1GM500840	50	M08	18	16	22	10	40	28	20
B1GM500850	50	M08	18	16	22	10	50	31	20
B1GM501020	50	M10	18	16	22	10	20	27,5	20
B1GM501030	50	M10	18	16	22	10	30	29	20
B1GM501040	50	M10	18	16	22	10	40	31	20
B1GM501050	50	M10	18	16	22	10	50	34	20

**B1a Handles and Grips** - SERIES IC Revolving Grip, Stud with Spanner



**Characteristics**

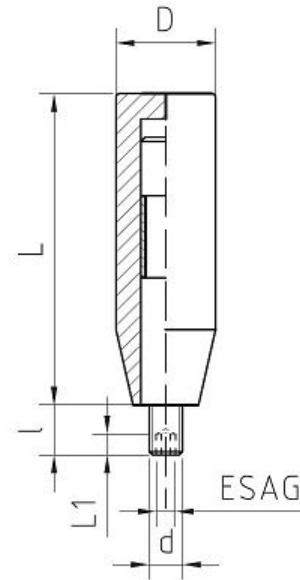
**Main Part Material:** Black Technopolymer, fiberglass-reinforced, solvents, oils, greases and other chemical agents proof

**Metallic Part Material & Finishing:** Zinc Plated Steel Screw with Locking Key

Code	D	d	I	L	Weight gr.	Packing Pcs.
B1IC1806	18	M06	12	51	18	20
B1IC2008	20	M08	15	71	35	20

Code	D	d	I	L	Weight gr.	Packing Pcs.
B1C2410	24	M10	15	81	66	20
B1C2812	28	M12	15	98	104	20

**B1a Handles and Grips** - SERIES IE Revolving Grip, Threaded Stud



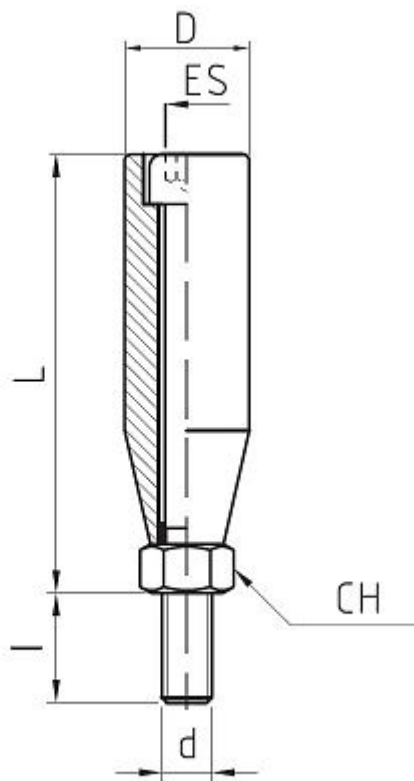
**Characteristics**

**Main Part Material:** Black Technopolymer, fiberglass-reinforced, solvents, oils, greases and other chemical agents proof

**Metallic Part Material & Finishing:** Zinc Plated Steel Screw with Clamping Hexagon

Code	D	d	I	L	L1	Weight gr.	Packing Pcs.
B11E1806	18	M06	12	46	4	22	20
B11E2008	20	M08	12	65	4	42	20
B11E2410	24	M10	15	77	4	80	20
B11E2812	28	M12	20	88	4	124	20

**B1a Handles and Grips** - SERIES IG Revolving Grip, Socket Head Screw



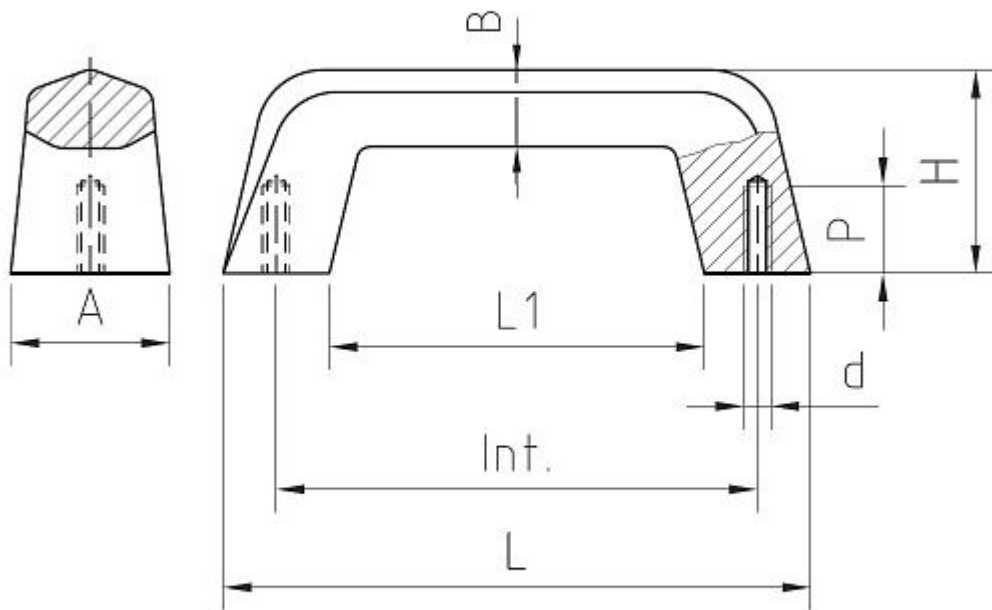
**Characteristics**

**Main Part Material:** Black Technopolymer, fiberglass-reinforced, solvents, oils, greases and other chemical agents proof

**Metallic Part Material & Finishing:** UNI5931 Screw with Nut

Code	D	I	L	Weight gr.	Spanner	Packing Pcs.
B1G1806	18	11	51	26	10x5	20
B1G2008	20	13	70	54	13x6	20
B1G2410	24	17	85	105	17x10	20
B1G2812	28	20	98	165	19x12	20

**B1a Handles and Grips** - SERIES M U-Handle, Moulded Threads

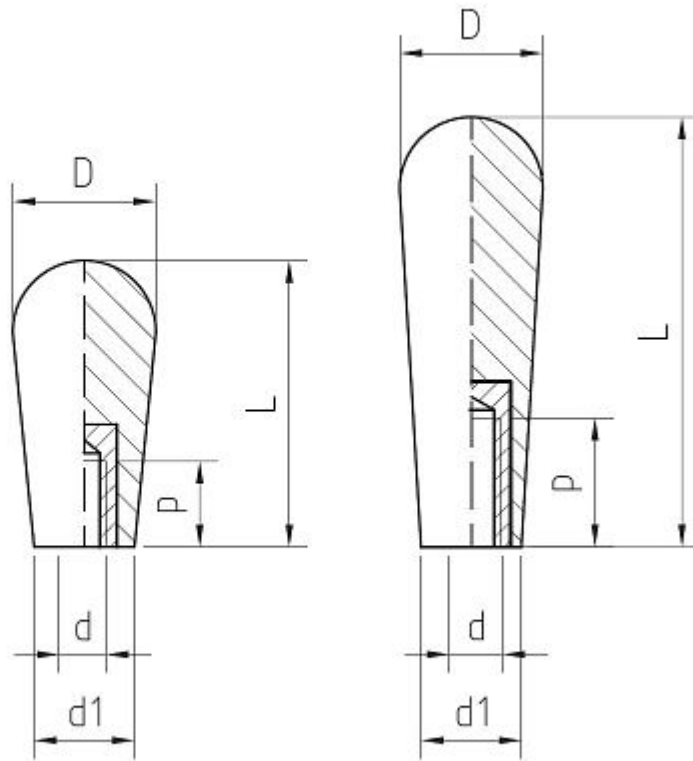


**Characteristics**

**Main Part Material:** Black Phenoplast, solvents, oils, greases and other chemical agents proof

**Standard Thread:** Moulded Threads

Code	A	B	d	H	L	L1	P	Weight gr.	Interaxe mm	Packing Pcs.
B1M12906	30	17	06MA	45	129	83	20	96	110±0,5	20
B1M16508	38	19,5	08MA	55	165	102	22	168	132,5±0,5	20
B1M18708	40	22	08MA	60	187	123	22	215	149±0,5	20



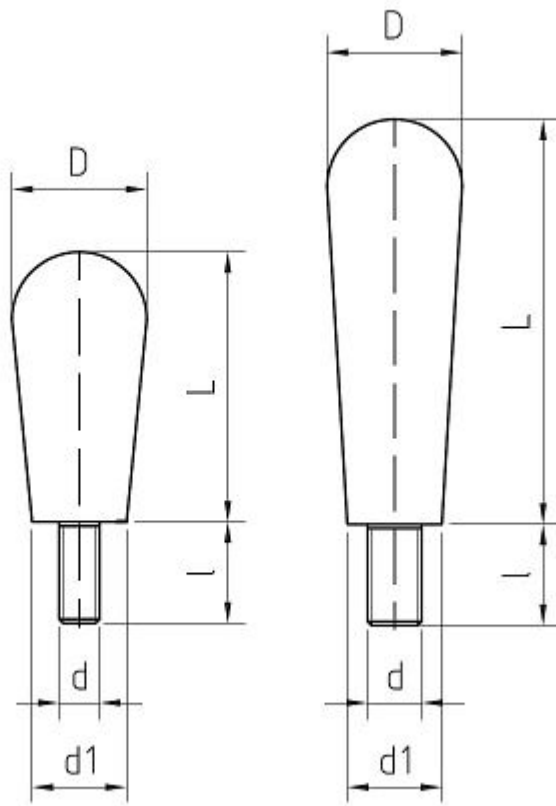
**Characteristics**

**Main Part Material:** Black Phenoplast, solvents, oils, greases and other chemical agents proof

**Metallic Part Material & Finishing:** Brass Insert, Threaded Blind Hole

Code	D	d	d1	L	Weight gr.	Packing Pcs.
B1MAB4006	20	06MA	15	40	18	20
B1MAB4008	20	08MA	15	40	20	20
B1MAB6006	20	06MA	14	60	24	20
B1MAB6008	20	08MA	14	60	22	20

**B1a Handles and Grips** - SERIES MAM Mini-Grip, Threaded Stud



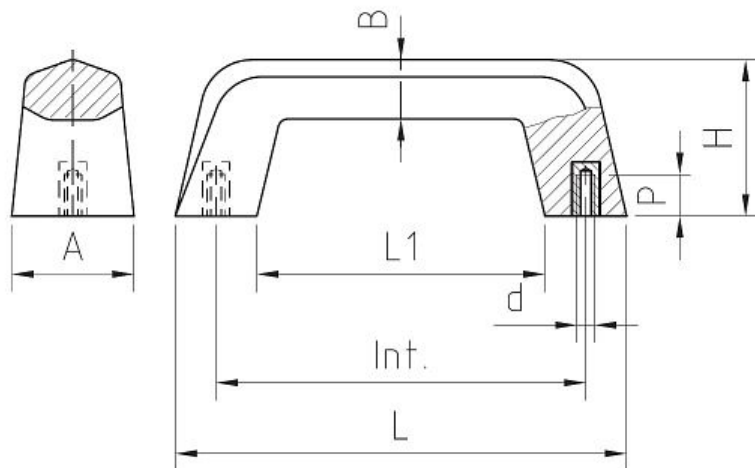
**Characteristics**

**Main Part Material:** Black Phenoplast, solvents, oils, greases and other chemical agents proof

**Metallic Part Material & Finishing:** Zinc Plated Steel Bolt, Chamfered End

Code	D	d	d1	l	L	Weight gr.	Packing Pcs.
B1MAM400615	20	06MA	15	15	40	17	20
B1MAM400815	20	08MA	15	15	40	19	20
B1MAM600515	20	06MA	14	15	60	21	20
B1MAM600615	20	08MA	14	15	60	23	20
B1MAM600830	20	08MA	14	30	60	28	20

## B1a Handles and Grips - SERIES MB U-Handle, Threaded Inserts



### Characteristics

**Main Part Material:** Black Phenoplast, solvents, oils, greases and other chemical agents proof

**Metallic Part Material & Finishing:** Brass Insert, Threaded Blind Hole

Code	A	B	d	H	L	L1	P	Weight gr.	Interaxe mm	Packing Pcs.
<b>B1MB12905</b>	30	17	05MA	45	129	83	12	100	110±0,5	20
<b>B1MB12906</b>	30	17	06MA	45	129	83	12	102	110±0,5	20
<b>B1MB12908</b>	30	17	08MA	45	129	83	16	107	110±0,5	20
<b>B1MB16508</b>	38	19,5	08MA	55	165	102	16	181	132,5±0,5	20
<b>B1MB16510</b>	38	19,5	10MA	55	165	102	20	184	132,5±0,5	20
<b>B1MB18708</b>	40	22	08MA	60	187	123	16	228	149±0,5	20