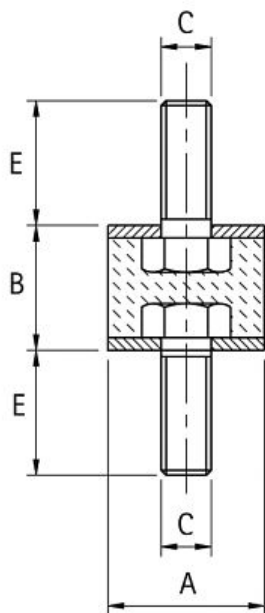


A1 Cylindrical Mountings



A1 Cylindrical Mountings - SERIES MM Type A (Double Male)



Characteristics

Main Part Material: NR/SBR Rubber Compound

Standard Hardness: 60 Shore A

Hardness Tolerance: ± 5 SH

On request: Different Screw Lengths

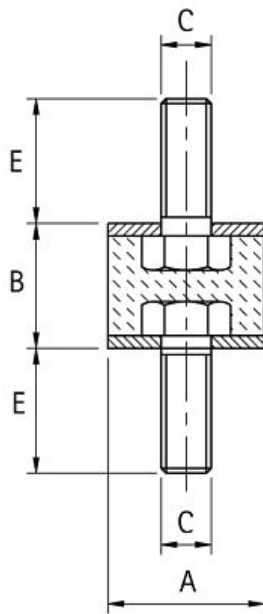
Metallic Part Material & Finishing: Zinc Plated Screw and Washer

Standard Thread: Screw pressed on the washer

Code	A	B	C	E	Max Compression Load daN	Max Shear Load daN	Packing Pcs.
A1MM1310	13	10	M5	10	15	2	1
A1MM1510	15	10	M4	10	15	2	1
A1MM1515	15	15	M4	14	15	2	1
A1MM2010	20	10	M6	16	36	3	1
A1MM2015	20	15	M6	16	34	4	1
A1MM2020	20	20	M6	16	34	2	1
A1MM2025	20	25	M6	16	24	2	1
A1MM2030	20	30	M6	16	24	3	1
A1MM2510	25	10	M6	20	35	5	1
A1MM2515	25	15	M6	18	35	5	1
A1MM2520/6	25	20	M6	18	45	5	1
A1MM2520/8	25	20	M8	20	45	5	1
A1MM2525	25	25	M6	18	40	5	1
A1MM2530/6	25	30	M6	18	34	3	1
A1MM2530/8	25	30	M8	20	34	3	1
A1MM3015	30	15	M8	23	42	9	1
A1MM3020	30	20	M8	23	66	9	1
A1MM3025	30	25	M8	20	66	9	1
A1MM3030	30	30	M8	23	61	7	1
A1MM3040	30	40	M8	23	55	5	1
A1MM4020	40	20	M8	23	63	12	1
A1MM4030/10	40	30	M10	28	98	15	1
A1MM4030/8	40	30	M8	23	98	15	1
A1MM4035	40	35	M8	23	88	13	1
A1MM4040/10	40	40	M10	28	107	13	1
A1MM4040/8	40	40	M8	23	107	13	1
A1MM5020	50	20	M10	28	168	21	1
A1MM5030	50	30	M10	28	158	19	1
A1MM5040	50	40	M10	28	143	17	1
A1MM5045	50	45	M10	28	136	16	1

Code	A	B	C	E	Max Compression Load daN	Max Shear Load daN	Packing Pcs.
A1MM5050	50	50	M10	28	133	13	1
A1MM6030/12	60	30	M12	37	172	36	1
A1MM6040/12	60	40	M12	37	169	28	1
A1MM6050/10	60	50	M10	35	199	24	1
A1MM6050/12	60	50	M12	37	199	24	1
A1MM6535	65	35	M12	37	300	46	1
A1MM6550	65	50	M12	37	230	23	1
A1MM7040/10	70	40	M10	28	210	40	1
A1MM7050/10	70	50	M10	28	230	55	1
A1MM7050/12	70	50	M12	37	230	55	1
A1MM7525	75	25	M12	37	382	89	1
A1MM7540	75	40	M12	37	377	79	1
A1MM7550	75	50	M12	37	372	69	1
A1MM10030	100	30	M16	45	700	110	1
A1MM10040	100	40	M16	45	685	99	1
A1MM10050	100	50	M16	45	560	99	1
A1MM10055	100	55	M16	45	635	79	1
A1MM10060	100	60	M16	45	587	49	1

A1 Cylindrical Mountings - SERIES MMT Type Soft A (Double Male)



Characteristics

Main Part Material: NR/SBR Rubber Compound

Standard Hardness: 45 Shore A

Hardness Tolerance: ± 5 SH

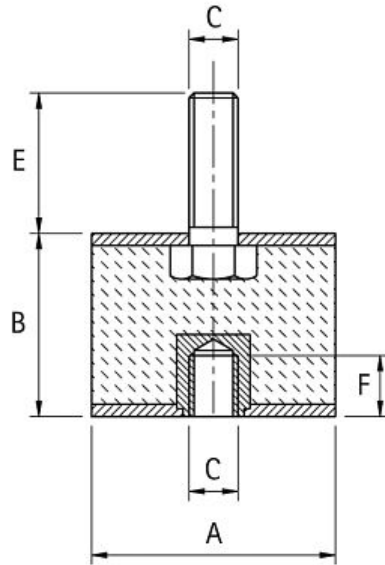
On request: Different Screw Lengths

Metallic Part Material & Finishing: Zinc Plated Screw and Washer

Standard Thread: Screw pressed on the washer

Code	A	B	C	E	Max Compression Load daN	Max Shear Load daN	Packing Pcs.
A1MMT2520	25	20	M6	18	27	3,3	1
A1MMT3020	30	20	M8	23	40	6	1
A1MMT3030	30	30	M8	23	37	4,7	1
A1MMT4030	40	30	M8	23	59	10	1
A1MMT5030	50	30	M10	10	95	13	1
A1MMT5040	50	40	M10	10	88	11	1

A1 Cylindrical Mountings - SERIES MF Type B (Male / Female)



Characteristics

Main Part Material: NR/SBR Rubber Compound

Standard Hardness: 60 Shore A

Hardness Tolerance: ± 5 SH

On request: Different Screw Lengths, Threaded Thru-Hole

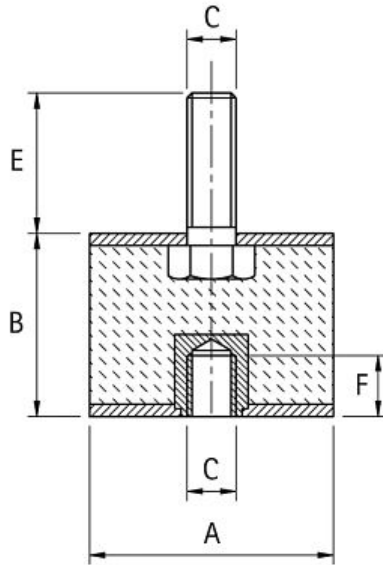
Metallic Part Material & Finishing: Zinc Plated Washers

Standard Thread: Zinc Plated Screw, Threaded Blind Hole

Code	A	B	C	E	F	Max Compression Load daN	Max Shear Load daN	Packing Pcs.
A1MF1515	15	15	M4	14	4	15	3	1
A1MF2015	20	15	M6	16	6	34	3	1
A1MF2020	20	20	M6	16	6	29	2	1
A1MF2025	20	25	M6	16	6	19	2	1
A1MF2030	20	30	M6	16	6	15	2	1
A1MF2515	25	15	M6	18	6	40	6	1
A1MF2520/6	25	20	M6	18	8	45	5	1
A1MF2520/8	25	20	M8	20	8	45	5	1
A1MF2525	25	25	M6	18	8	40	4	1
A1MF2530	25	30	M6	18	8	35	3	1
A1MF3015	30	15	M8	18	8	58	10	1
A1MF3020	30	20	M8	23	6	66	9	1
A1MF3020-14	30	20	M8	14	6	66	9	1
A1MF3030	30	30	M8	23	10	61	7	1
A1MF3040	30	40	M8	23	10	54	5	1
A1MF4020	40	20	M8	23	6	88	16	1
A1MF4030/10	40	30	M10	28	10	98	15	1
A1MF4030/8	40	30	M8	23	10	98	15	1
A1MF4035	40	35	M8	23	10	88	13	1
A1MF4040/10	40	40	M10	28	10	108	13	1
A1MF4040/8	40	40	M8	23	10	108	13	1
A1MF5020	50	20	M10	28	10	169	21	1
A1MF5030	50	30	M10	28	10	159	20	1
A1MF5040	50	40	M10	28	10	144	18	1
A1MF5050	50	50	M10	28	10	134	14	1
A1MF6030/12	60	30	M12	37	11	228	40	1
A1MF6035/10	60	35	M10	28	10	228	40	1
A1MF6040/12	60	40	M12	28	11	214	30	1
A1MF6050/10	60	50	M10	35	10	200	24	1
A1MF6050/12	60	50	M12	37	11	200	24	1

Code	A	B	C	E	F	Max Compression Load daN	Max Shear Load daN	Packing Pcs.
A1MF6535	65	35	M12	37	11	300	46	1
A1MF6550	65	50	M12	37	11	230	23	1
A1MF7050/12	70	50	M12	37	11	280	38	1
A1MF7525	75	25	M12	37	11	382	89	1
A1MF7540	75	40	M12	37	11	378	78	1
A1MF7550	75	50	M12	37	11	373	68	1
A1MF10030	100	30	M16	45	16	720	110	1
A1MF10040	100	40	M16	45	16	686	98	1
A1MF10050	100	50	M16	45	16	660	98	1
A1MF10055	100	55	M16	45	16	636	78	1
A1MF10060	100	60	M16	45	16	586	48	1

A1 Cylindrical Mountings - SERIES MFT Type Soft B (Male / Female)



Characteristics

Main Part Material: NR/SBR Rubber Compound

Standard Hardness: 45 Shore A

Hardness Tolerance: ± 5 SH

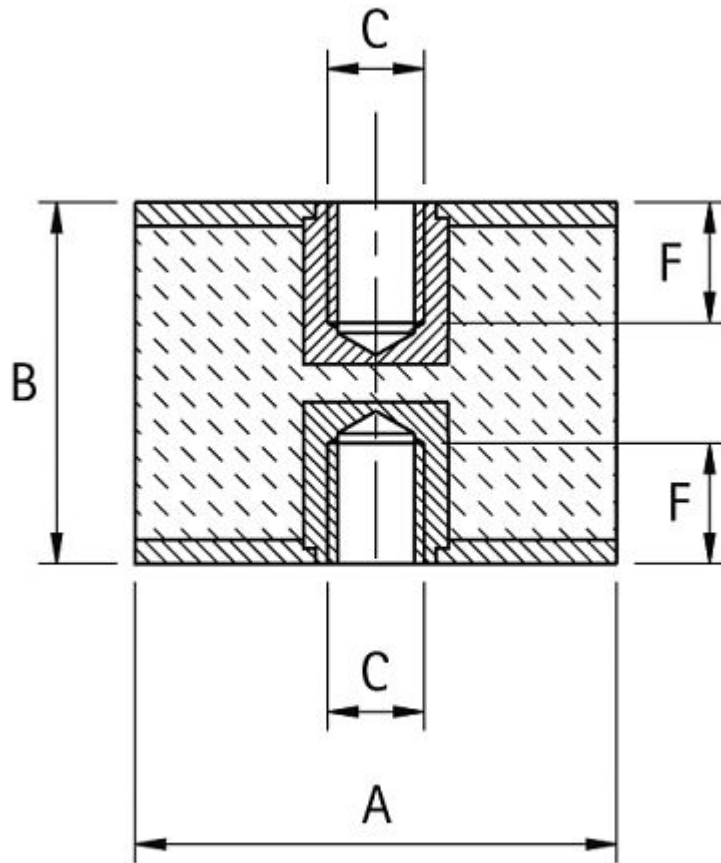
On request: Different Screw Lengths, Threaded Thru-Hole

Metallic Part Material & Finishing: Zinc Plated Washers

Standard Thread: Zinc Plated Screw, Threaded Blind Hole

Code	A	B	C	E	Max Compression Load daN	Max Shear Load daN	Packing Pcs.
A1MFT2025	20	25	M6	16	11	1,3	1
A1MFT2520	25	20	M6	18	27	3,3	1
A1MFT3030	30	30	M8	23	37	4,7	1
A1MFT4030	40	30	M8	23	59	10	1
A1MFT5030	50	30	M10	28	95	13	1
A1MFT5050	50	50	M10	28	80	9,4	1
A1MFT6035	60	35	M10	30	137	27	1
A1MFT7550	75	50	M12	37	224	45	1

A1 Cylindrical Mountings - SERIES FF Type C (Double Female)



Characteristics

Main Part Material: NR/SBR Rubber Compound

Standard Hardness: 60 Shore A

Hardness Tolerance: ± 5 SH

On request: Threaded Thru-Hole

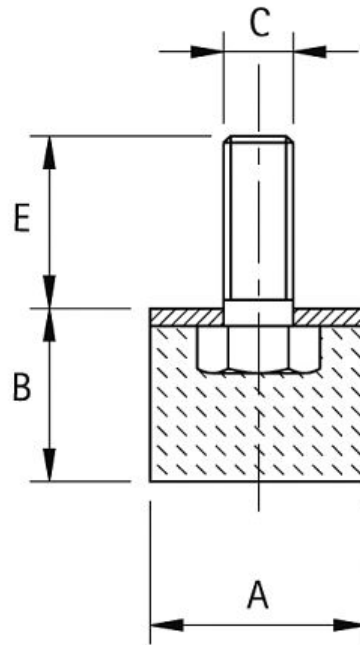
Metallic Part Material & Finishing: Zinc Plated Washers

Standard Thread: Threaded Blind Hole

Code	A	B	C	F	Max Compression Load daN	Max Shear Load daN	Packing Pcs.
A1FF1515	15	15	M4	4	15	2	1
A1FF2020	20	20	M6	6	20	2	1
A1FF2025	20	25	M6	6	18	2	1
A1FF2030	20	30	M6	6	16	2	1
A1FF2520	25	20	M6	8	45	5	1
A1FF2525	25	25	M6	8	42	4	1
A1FF2530	25	30	M6	8	35	3	1
A1FF3020	30	20	M8	6	66	9	1
A1FF3030	30	30	M8	10	61	8	1
A1FF3040	30	40	M8	10	54	5	1
A1FF4030/10	40	30	M10	10	98	15	1
A1FF4030/8	40	30	M8	10	98	15	1
A1FF4035/8	40	35	M8	10	108	13	1
A1FF4040/10	40	40	M10	10	108	13	1
A1FF4040/8	40	40	M8	10	108	13	1
A1FF5030	50	30	M10	10	169	19	1
A1FF5040	50	40	M10	10	144	17	1
A1FF5050	50	50	M10	10	134	13	1
A1FF6030/10	60	30	M10	10	210	30	1
A1FF6030/12	60	30	M12	12	210	30	1
A1FF6040/12	60	40	M12	11	210	30	1
A1FF6050/10	60	50	M10	10	200	24	1

Code	A	B	C	F	Max Compression Load daN	Max Shear Load daN	Packing Pcs.
A1FF7530	75	30	M12	12	390	90	1
A1FF7540	75	40	M12	12	378	78	1
A1FF7550	75	50	M12	12	373	68	1
A1FF10050	100	50	M16	14	660	98	1
A1FF10055	100	55	M16	14	636	78	1
A1FF10060	100	60	M16	14	590	49	1

A1 Cylindrical Mountings - SERIES PM Type D (Male Footing)



Characteristics

Main Part Material: NR/SBR Rubber Compound

Standard Hardness: 60 Shore A

Hardness Tolerance: ± 5 SH

On request: Different Screw Lengths

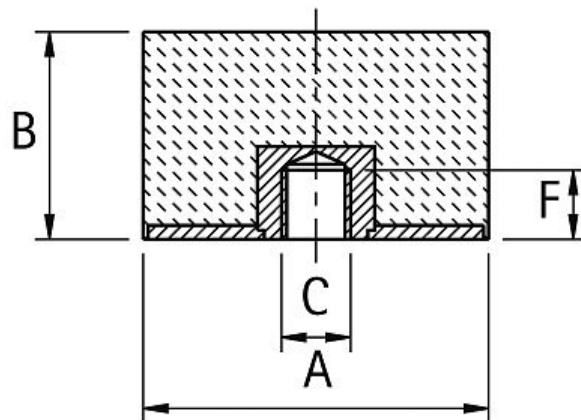
Metallic Part Material & Finishing: Zinc Plated Screw and Washer

Standard Thread: Screw pressed on the washer

Code	A	B	C	E	Max Compression Load daN	Packing Pcs.
A1PM1515	15	15	M4	14	10	1
A1PM1610	16	10	M5	12	12	1
A1PM2010	20	10	M6	16	16	1
A1PM2015	20	15	M6	16	18	1
A1PM2020	20	20	M6	16	18	1
A1PM2025	20	25	M6	16	18	1
A1PM2030	20	30	M6	16	16	1
A1PM2515	25	15	M6	18	29	1
A1PM2520/6	25	20	M6	18	29	1
A1PM2520/8	25	20	M8	20	29	1
A1PM2525	25	25	M6	18	29	1
A1PM2530/6	25	30	M6	18	29	1
A1PM2530/8	25	30	M8	20	29	1
A1PM3010	30	10	M8	23	42	1
A1PM3015	30	15	M8	23	42	1
A1PM3020	30	20	M8	23	42	1
A1PM3025	30	25	M8	23	42	1
A1PM3030	30	30	M8	23	38	1
A1PM3040	30	40	M8	23	38	1
A1PM4020	40	20	M8	23	57	1
A1PM4030/10	40	30	M10	28	75	1

Code	A	B	C	E	Max Compression Load daN	Packing Pcs.
A1PM4030/8	40	30	M8	23	75	1
A1PM4035/8	40	35	M8	23	75	1
A1PM4040/10	40	40	M10	28	75	1
A1PM4040/8	40	40	M8	23	75	1
A1PM5020	50	20	M10	28	117	1
A1PM5030	50	30	M10	28	117	1
A1PM5040	50	40	M10	28	117	1
A1PM5045	50	45	M10	28	117	1
A1PM5050	50	50	M10	28	117	1
A1PM6020/12	60	20	M12	37	169	1
A1PM6030/12	60	30	M12	37	169	1
A1PM6040/12	60	40	M12	37	169	1
A1PM6050/10	60	50	M10	35	169	1
A1PM6050/12	60	50	M12	37	169	1
A1PM7525	75	25	M12	37	265	1
A1PM7540	75	40	M12	37	265	1
A1PM7550	75	50	M12	37	265	1
A1PM10040	100	40	M16	45	471	1
A1PM10050	100	50	M16	45	471	1
A1PM10080	100	80	M16	57	380	1

A1 Cylindrical Mountings - SERIES PF Type E (Female Footing)



Characteristics

Main Part Material: NR/SBR Rubber Compound

Standard Hardness: 60 Shore A

Hardness Tolerance: ± 5 SH

On request: Other Hardnesses

Metallic Part Material & Finishing: Zinc Plated Washers

Standard Thread: Threaded Blind Hole

Code	A	B	C	F	Max Compression Load daN	Packing Pcs.
A1PF2520	25	20	M6	8	29	1
A1PF3020	30	20	M8	6	42	1
A1PF4030	40	30	M8	10	75	1
A1PF5030	50	30	M10	9	117	1